



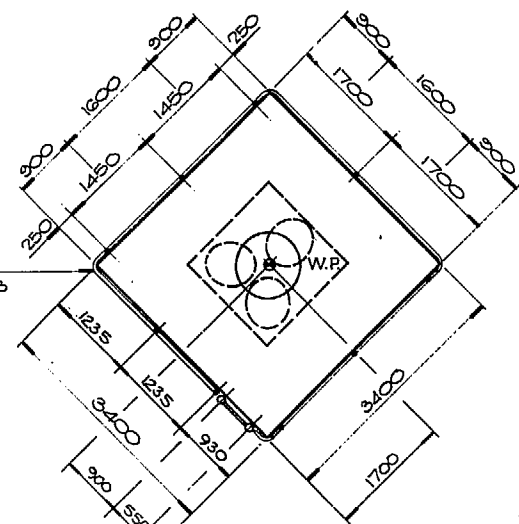
ATTACHMENT 3
STRUCTURE DRAWINGS



BOND REEF DRAWINGS

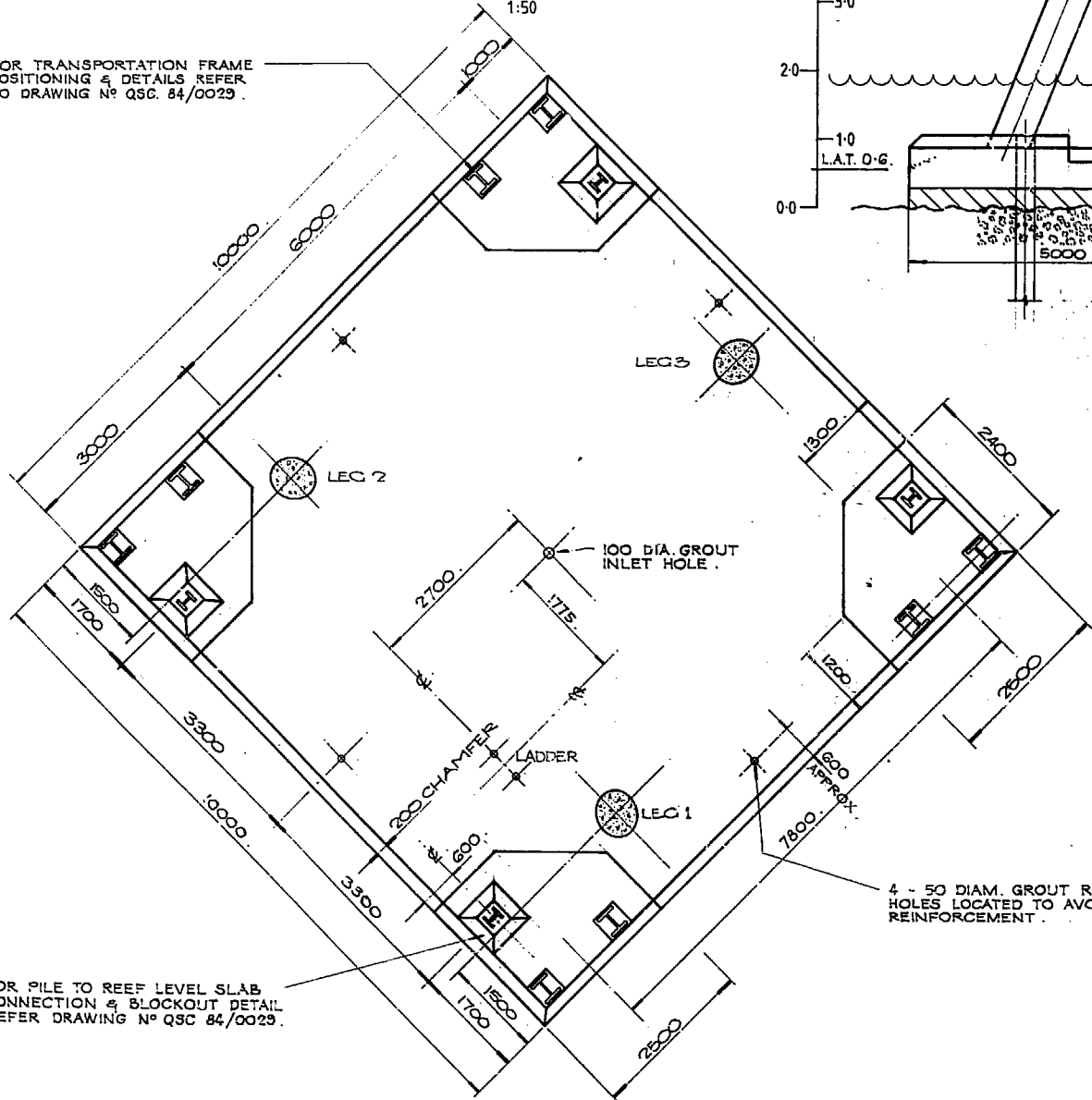


FOR HANDRAIL DETAILS
REFER DRG. N° QSC 84/0033



PLAN OF ACCESS PLATFORM
1:50

FOR TRANSPORTATION FRAME
POSITIONING & DETAILS REFER
TO DRAWING N° QSC 84/0029

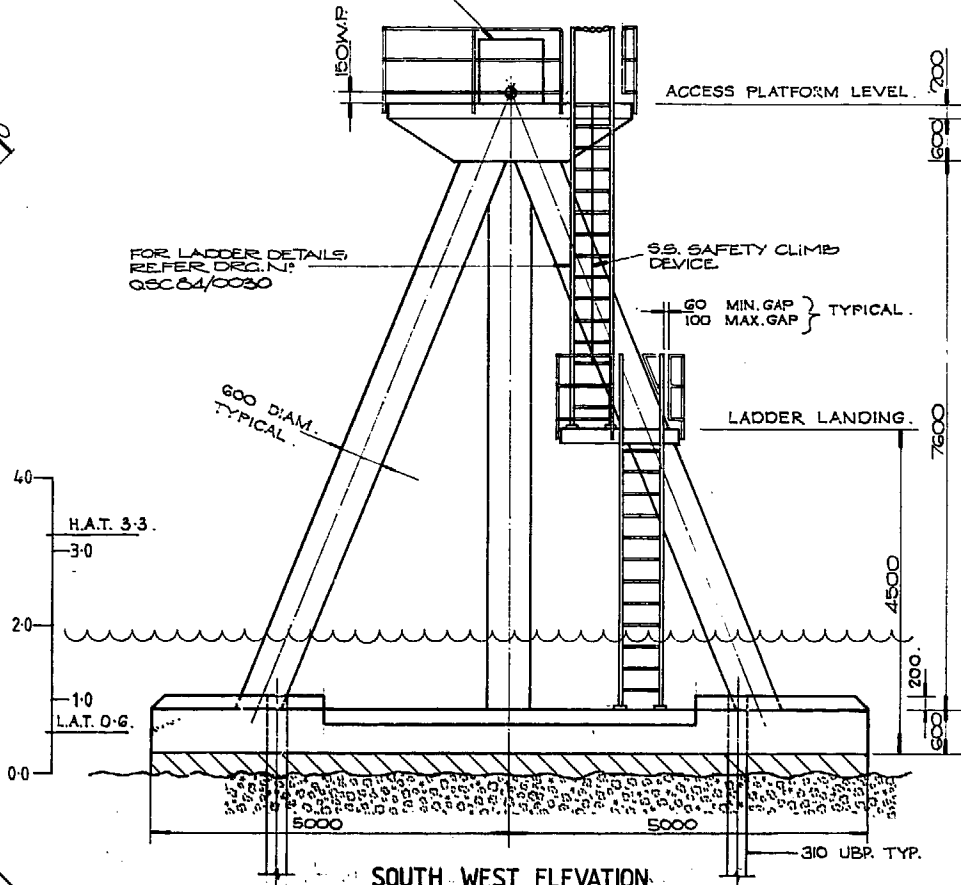


PLAN OF REEF LEVEL SLAB 1:50

NOTE: FOR STRUCTURAL DETAILS REFER
DRG. N° QSC 84/0028

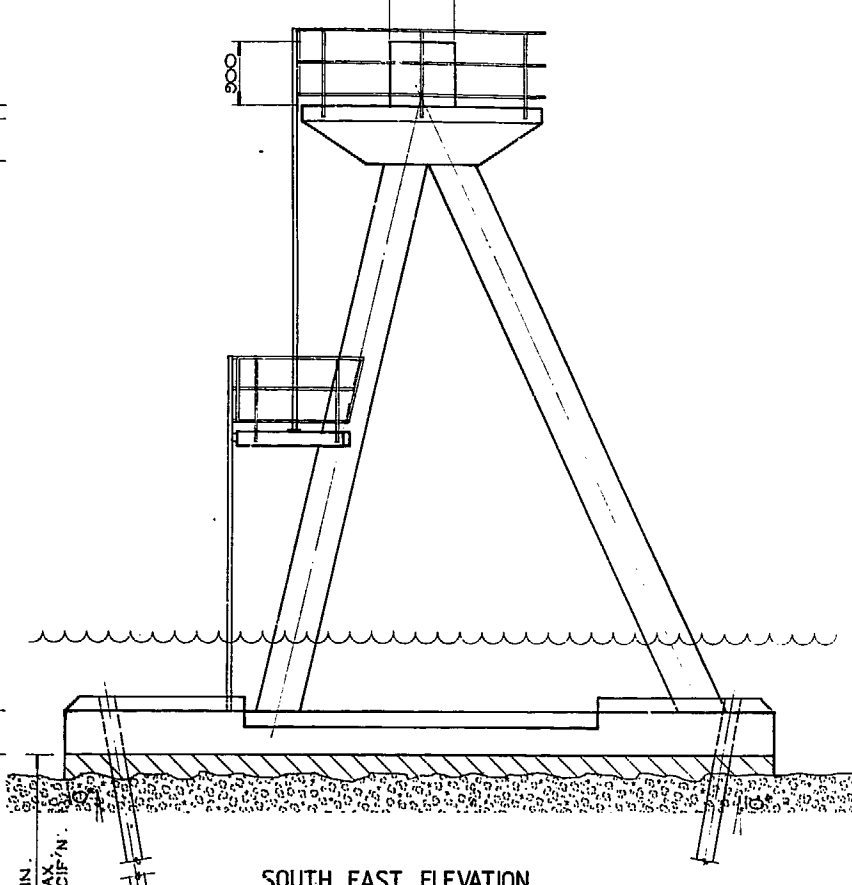
FOR DETAILS OF DAYMARK
REFER DRG. N° QSC 84/0726

FOR LADDER DETAILS
REFER DRG. N°
QSC 84/0030

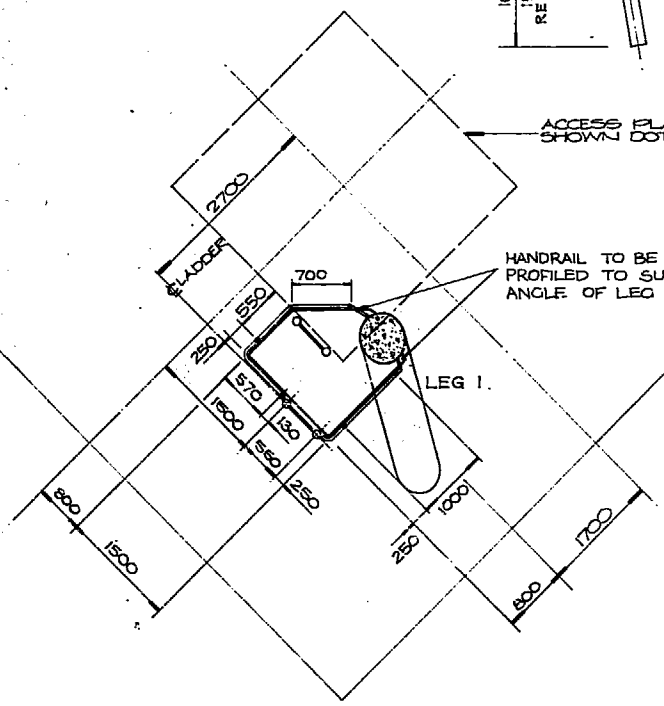


SOUTH WEST ELEVATION
1:50

900 DIAM.



SOUTH EAST ELEVATION
1:50



PLAN OF LADDER LANDING
1:50

1. DIMENSIONS CLARIFIED
AMENDMENT

**Wholohan
Grill + Partners**
SYDNEY SALE
PRINCIPAL *W. Wholohan* 8/10/84



**Department of
Housing and Construction**

DESIGNED *W.P.*
DRAWN *P.C.*
CHECKED *D.M.*

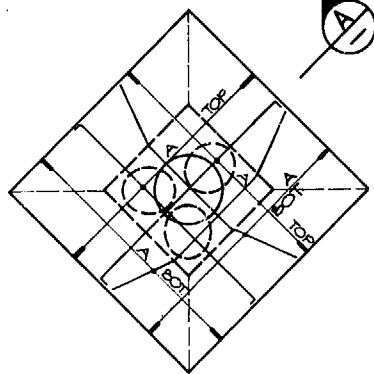
D.P.L. *A. Harrison*
HEAD OF DISCIPLINE
PROJECT MANAGER *P.C.*
DIRECTOR *P.C.*

HYDROGRAPHERS PASSAGE
PROVISION OF
NAVIGATIONAL AIDS
BOND REEF
GENERAL ARRANGEMENT &
LAYOUT

DRG. No. CN-3-332	SCALE AS SHOWN	DATE	SHEET REFERENCE
Sheet 16 of 45 Sheets	FILE ST103	SPECIFICATION QSC 84/3 BR	DRAWING NUMBER
Issue 2	QSC 84/0027/1		

PAGE NUMBER:

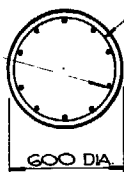
DRAWING COPY SIZE: 140 mm WHEN A1 SIZE 70 mm WHEN A3 SIZE
DRAWING SHEET MATERIAL: A1 SIZE 110G/SCLM TRACING PAPER
PRINTER'S INFORMATION: A1 SIZE 110G/SCLM TRACING PAPER



PLAN OF ACCESS PLATFORM

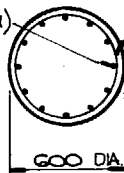
1:50

10 Y28 (LEGS 2 & 3)



SECTION B
1:20

12Y32 (LEG1)

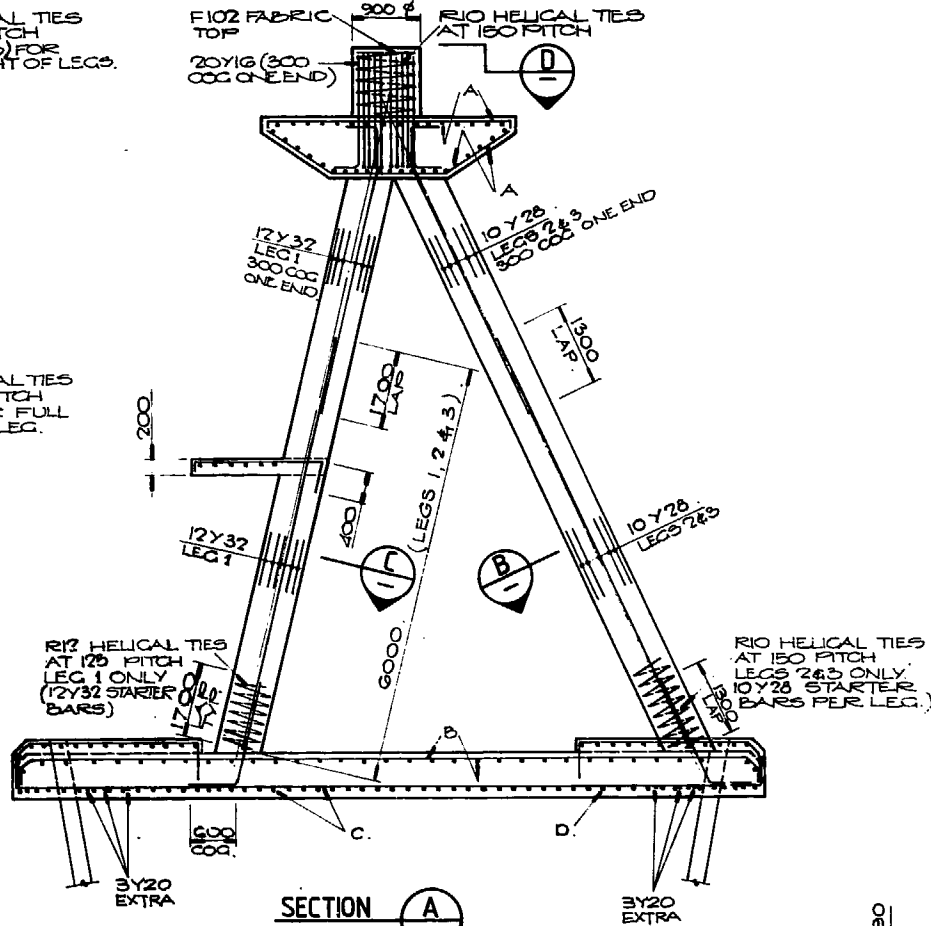


SECTION C
1:20

R10 HELICAL TIES AT 150 PITCH (LEGS 2 & 3) FOR FULL HEIGHT OF LEGS.

F102 FABRIC TOP

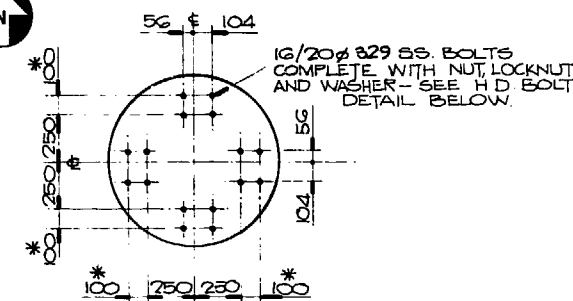
20Y16 (300 OCC ONE END)



SECTION A
1:50

REINFORCEMENT LEGEND

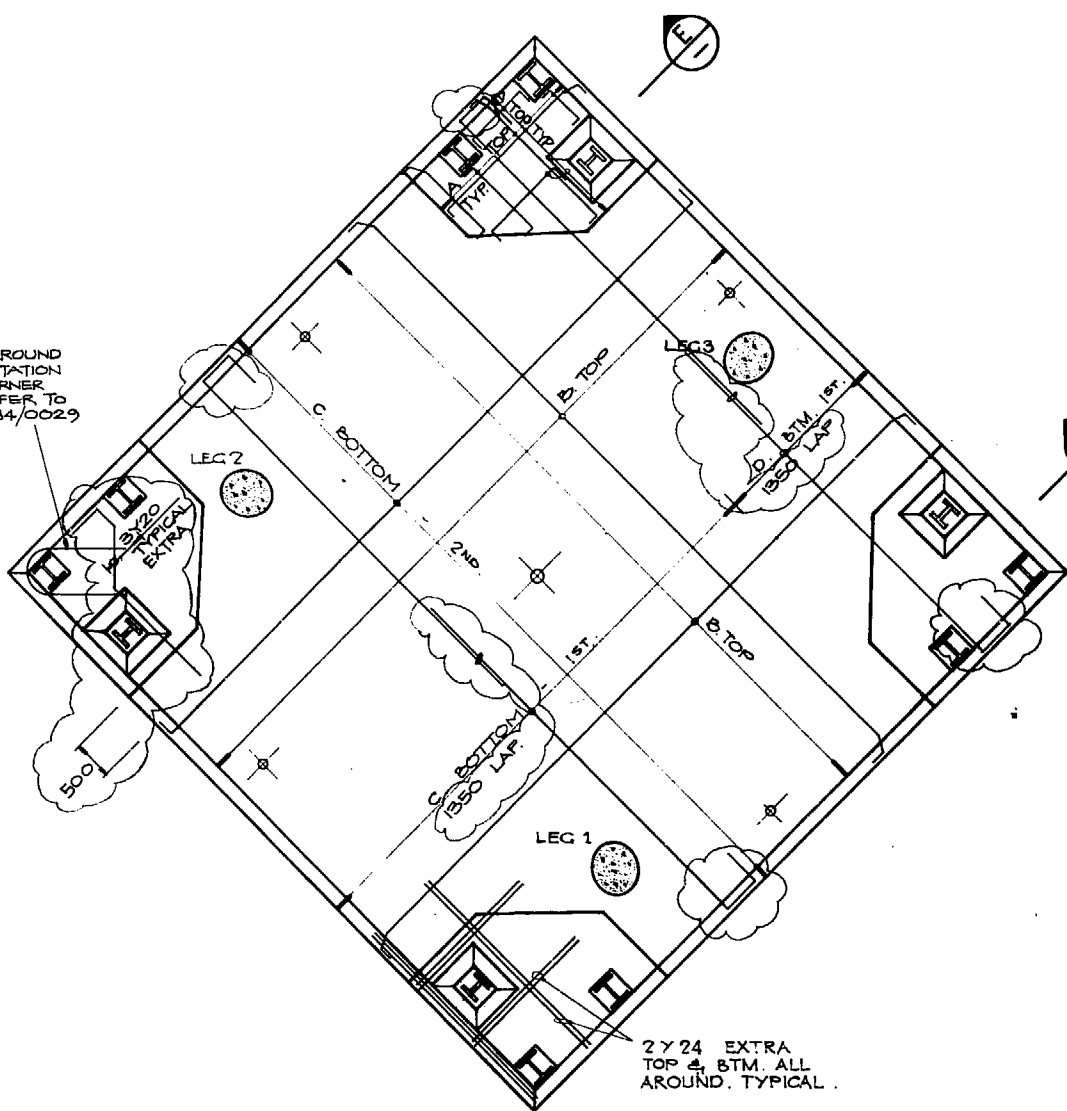
TAG	BAR	SPACING
A	Y12	150 CRS.
B	Y24	300 CRS.
C	Y24	180 CRS.
D	Y24	100 CRS.



VIEW D
1:20

* CONFIRM DIMENSION PRIOR TO FABRICATION.

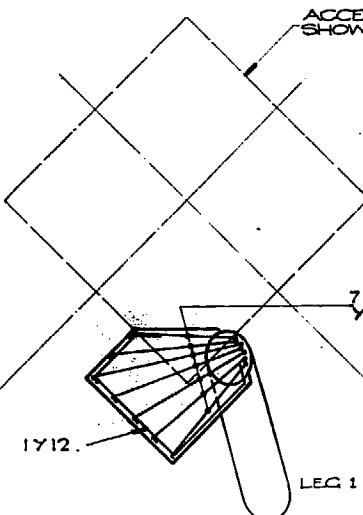
U-BARS AROUND TRANSPORTATION FRAME CORNER POSTS - REFER TO DRG. QSC84/0029



PLAN OF REEF LEVEL SLAB

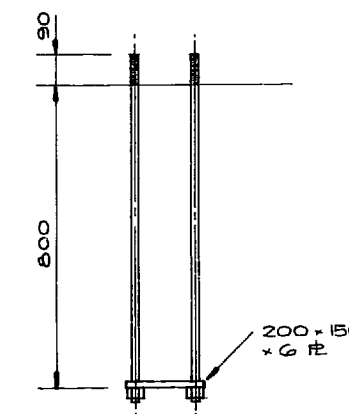
1:50

ACCESS PLATFORM ABOVE SHOWN DOTTED.

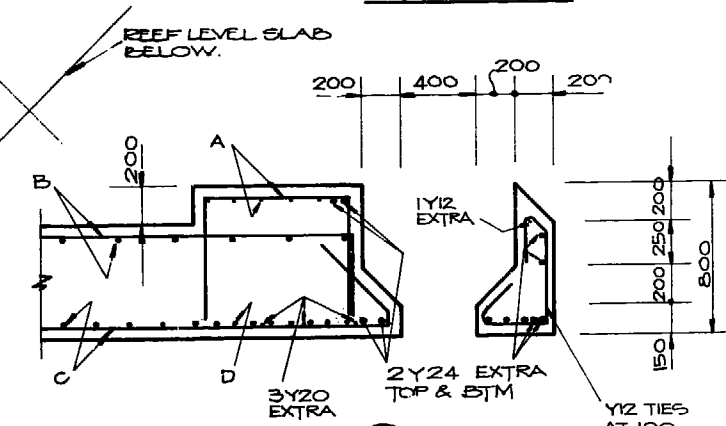


PLAN OF LADDER LANDING

1:50



H.D. BOLT DETAIL



SECTION E
1:20

8/6/84	REEF LEVEL SLAB REINF. REVISED
AMENDMENT	
Wholohan Grill + Partners	
SYDNEY	SALE
PRINCIPAL	8/16/84



Department of Housing and Construction

DESIGNED	<i>[Signature]</i>
DRAWN	<i>[Signature]</i>
CHECKED	<i>[Signature]</i>
D.P.L.	<i>[Signature]</i>
HEAD OF DISCIPLINE	
PROJECT MANAGER	<i>[Signature]</i>
DIRECTOR	<i>[Signature]</i>

HYDROGRAPHERS PASSAGE PROVISION OF NAVIGATIONAL AIDS BOND REEF BASE STRUCTURAL DETAILS

DRG. No.	CN-3-332
Sheet	17 of 45 Sheets
Issue	2

FOR DEPARTMENT OF TRANSPORT	SCALE AS SHOWN	DATE	SHEET REFERENCE
FILE ST103	SPECIFICATION QSC 84/3 BR		
DRAWING NUMBER	QSC 84/0028 / 1		

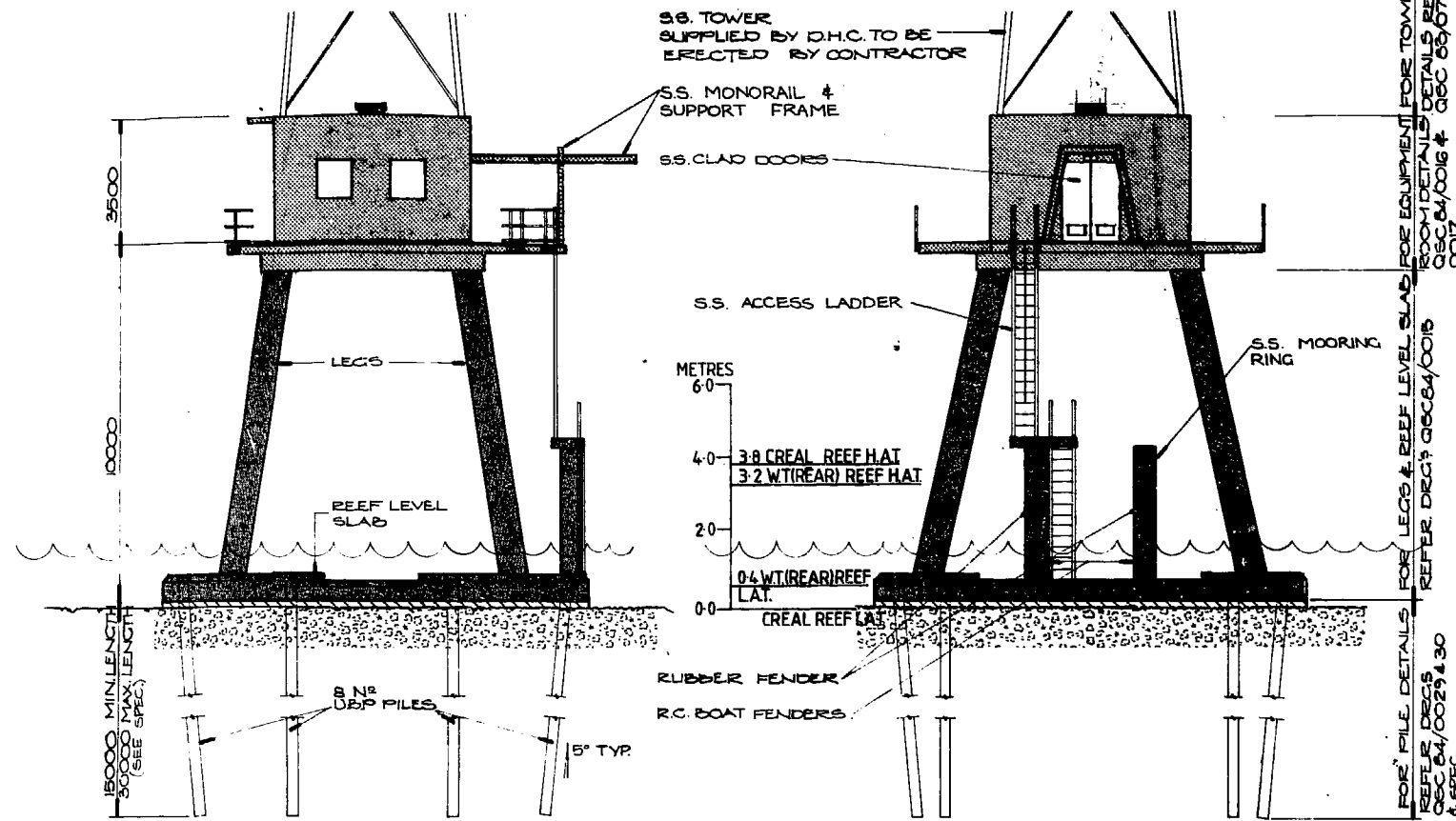
PAGE NUMBER:

DRAWING COPY SIZE: 140 mm WHEN A1 SIZE 70 mm WHEN A3 SIZE
DRAWING SHEET MATERIAL: A1 SIZE 110G/SQ.M TRACING PAPER

PRINTERS INFORMATION:

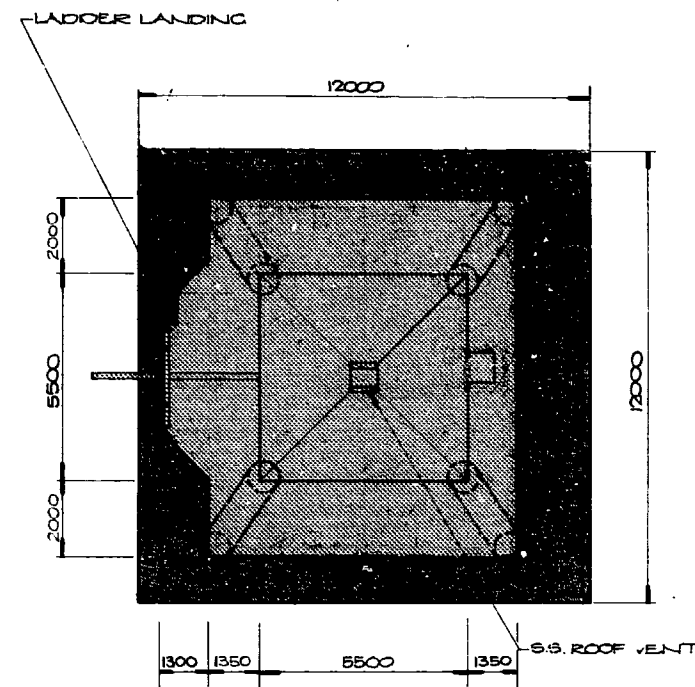


WHITE TIP REEF REAR AND MAIN AND CREAL REEF DRAWINGS

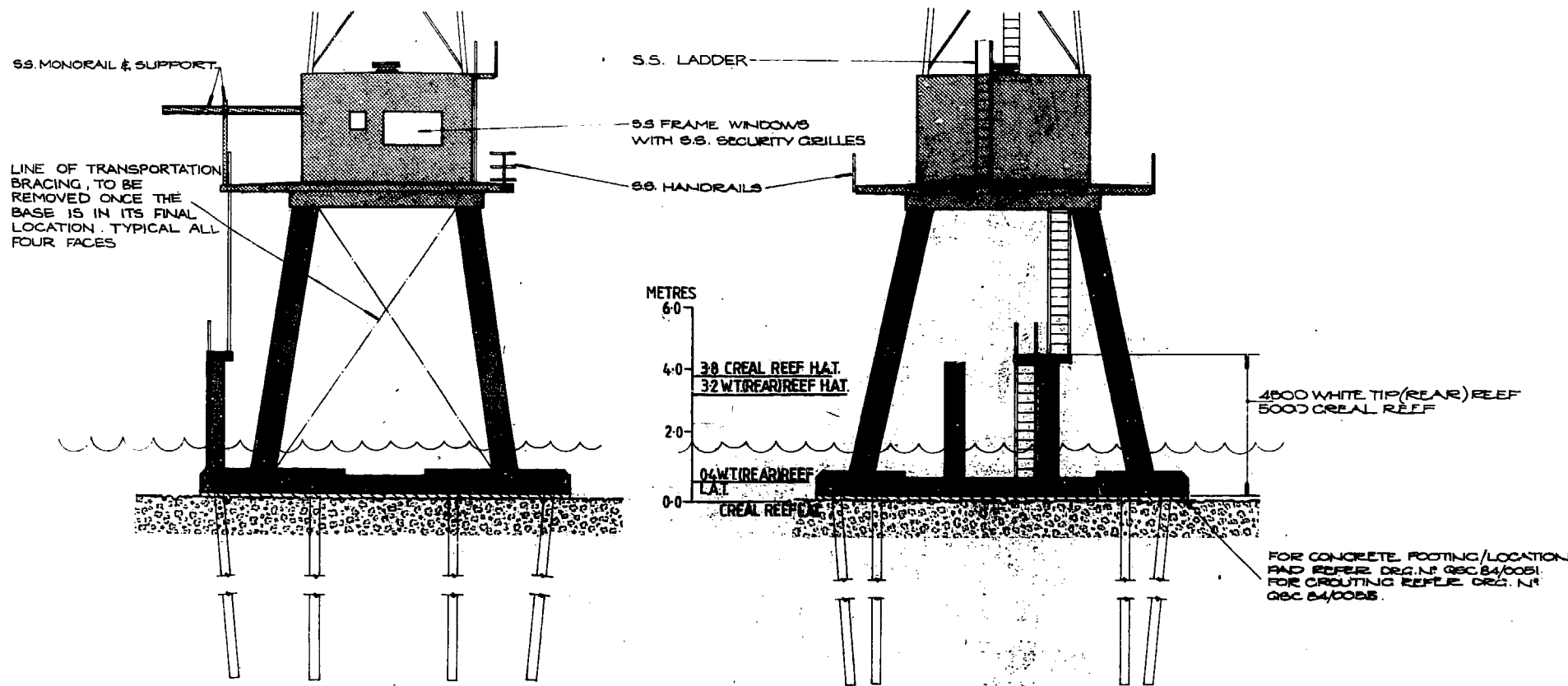


NORTH ELEVATION
1:100

WEST ELEVATION
1:100



PLAN
1:100



SOUTH ELEVATION
1:100

EAST ELEVATION
1:100

DRAWING COPY SIZE:
140 mm WHEN AT SIZE
70 mm WHEN A3 SIZE

PRINTER'S INFORMATION: A1 SIZE 110G/50.M TRACING PAPER

LINE OF TRANSPORTATION BRACING, TO BE REMOVED ONCE THE BASE IS IN ITS FINAL LOCATION. TYPICAL ALL FOUR FACES.

FOR CONCRETE FOOTING/LOCATION AND REFER. DRG. N° QSC 84/0051. FOR CIRCUITING REEF. DRG. N° QSC 84/0055.

AMENDMENT

Wholohan Grill + Partners

SYDNEY SALES

PRINCIPAL *W. Paton* 8/1/84

AUSTRALIA

Department of Housing and Construction

DESIGNED *[Signature]*

DRAWN *[Signature]*

CHECKED *[Signature]*

D.P.L. *R. Thomson 2/1/84*

HEAD OF DISCIPLINE

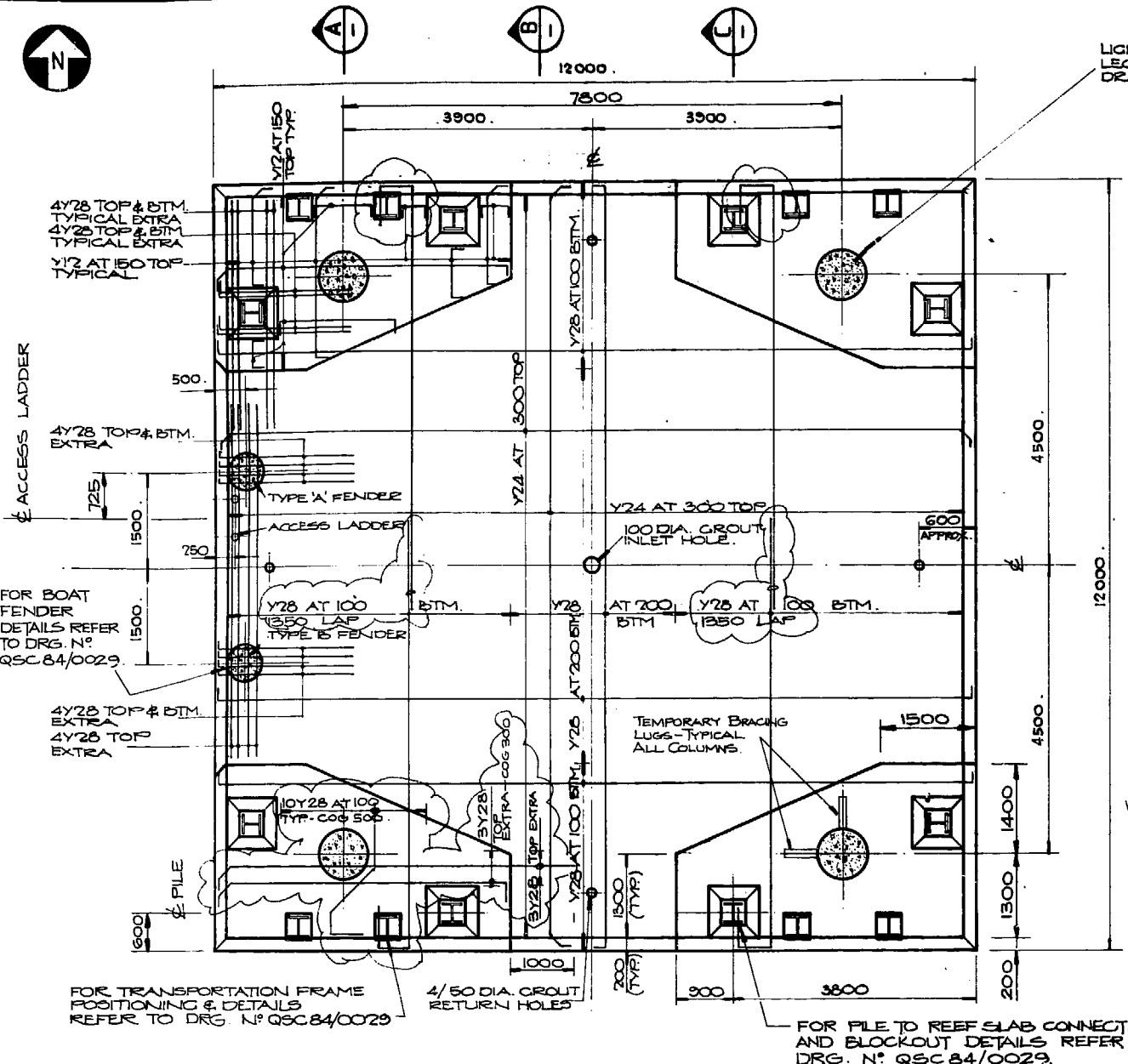
PROJECT MANAGER *[Signature]*

DIRECTOR *[Signature]* 2/6/84

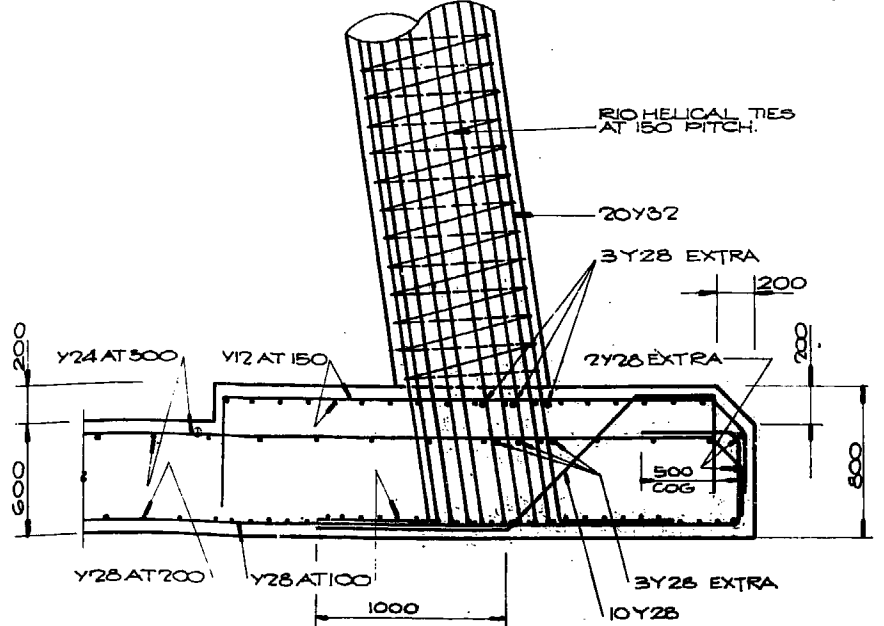
HYDROGRAPHERS PASSAGE PROVISION OF NAVIGATIONAL AIDS WHITE TIP (REAR) & CREAL REEFS GENERAL ARRANGEMENT

DRG. No.	CN-3-332
Sheet	3 of 45 Sheets
Issue	2

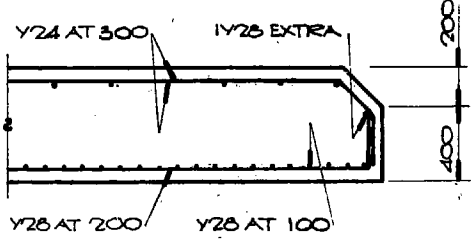
FOR DEPARTMENT OF TRANSPORT
SCALE DATE SHEET REFERENCE AS SHOWN
FILE SPECIFICATION ST103 QSC 84/3 BR
DRAWING NUMBER
QSC 84/0014
PAGE NUMBER:



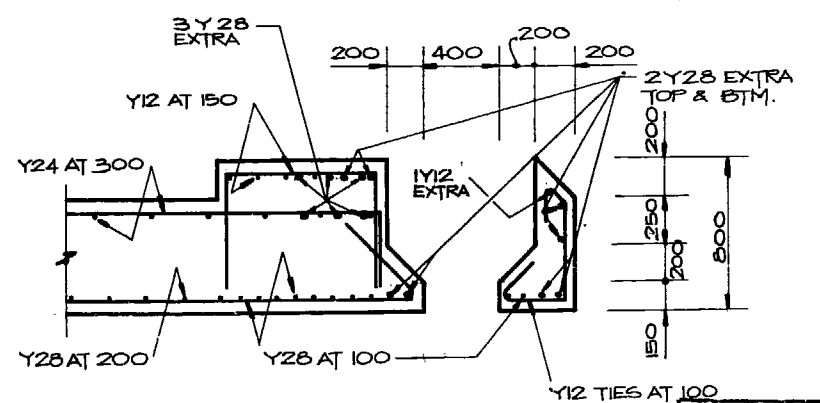
REEF LEVEL SLAB PLAN
1:50
NOTE: BARS IN NORTH-SOUTH DIRECTION TO BE LAID FIRST AND LAST.



SECTION A
1:20

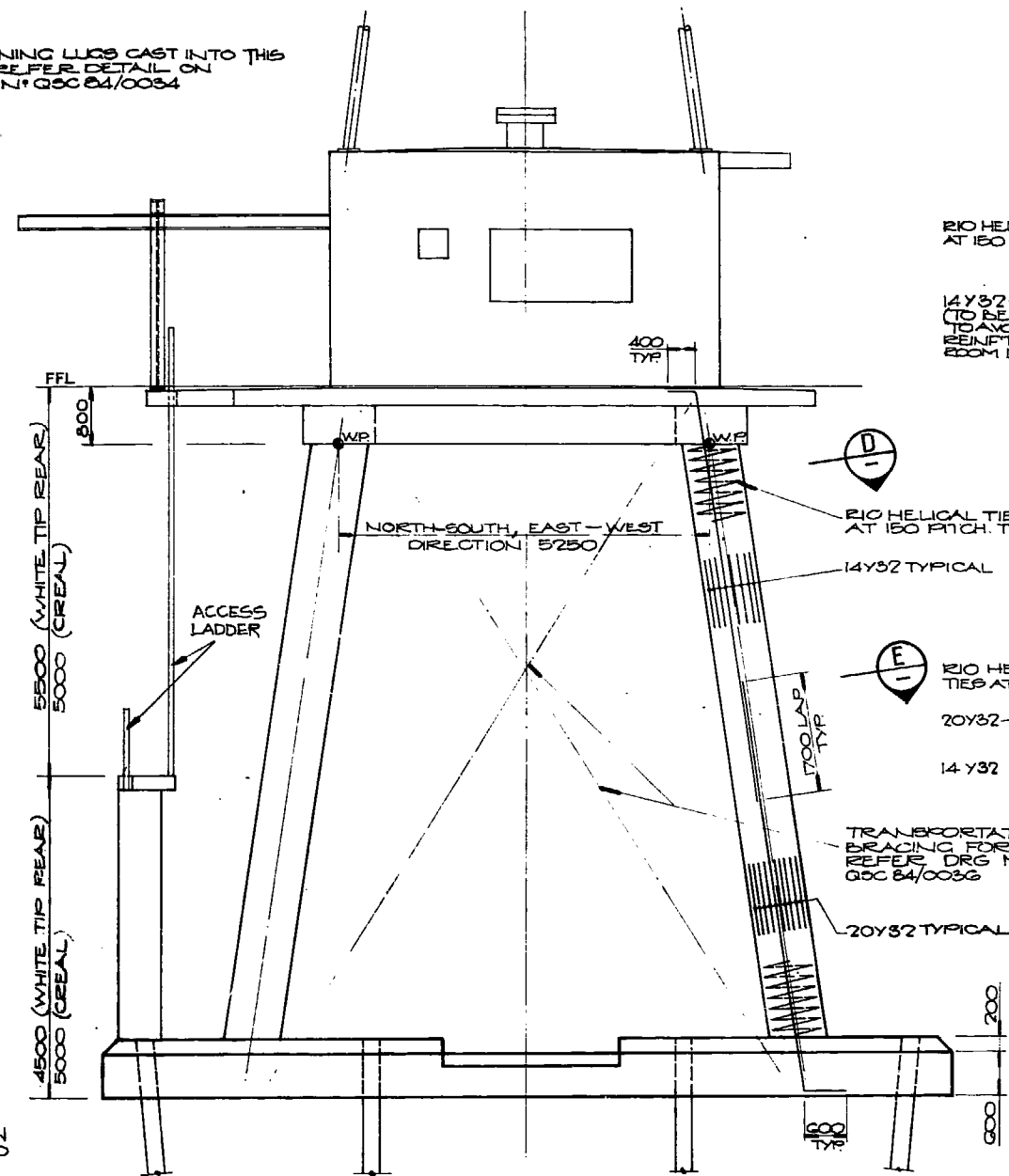


SECTION B
1:20

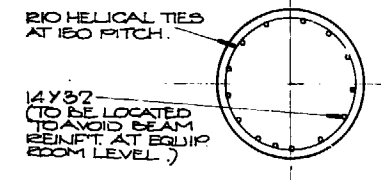


SECTION C
1:20

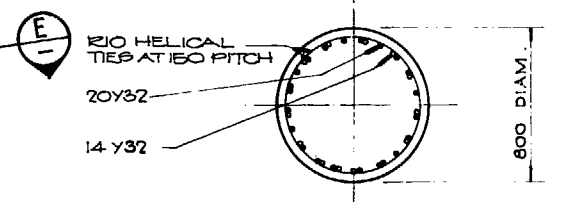
LIGHTNING LUGS CAST IN TO THIS LEG REFER DETAIL Q/L DRG. N° QSC 84/0034



SOUTH ELEVATION
1:50



SECTION D
1:20



SECTION E
1:20

18/6/84 REEF LEVEL SLAB REINF. REVISED

AMENDMENT	
Wholohan Grill + Partners	SYDNEY SALE
PRINCIPAL	16/84



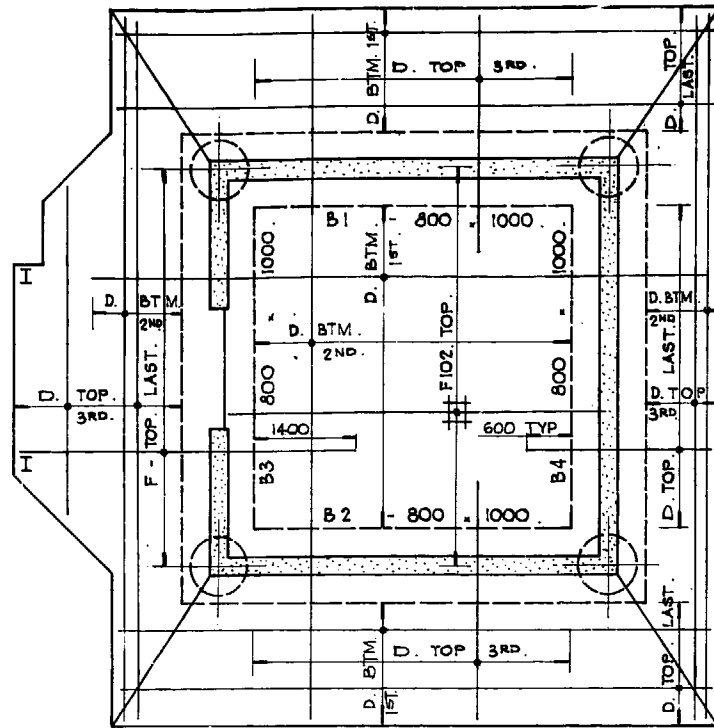
DESIGNED	<i>[Signature]</i>
DRAWN	<i>[Signature]</i>
CHECKED	<i>[Signature]</i>
D.P.L.	<i>[Signature]</i>
HEAD OF DISCIPLINE	
PROJECT MANAGER	<i>[Signature]</i>
DIRECTOR	<i>[Signature]</i>

HYDROGRAPHERS PASSAGE
PROVISION OF NAVIGATIONAL AIDS
WHITE TIP (REAR) & CREAL REEFS
REEF LEVEL LAYOUT AND STRUCTURAL DETAILS

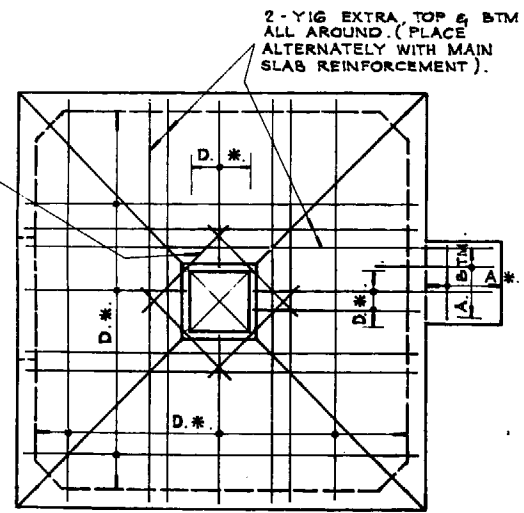
FOR DEPARTMENT OF TRANSPORT

DRG. No. CL-3-332	SCALE AS SHOWN	DATE	SHEET REFERENCE
Sheet 4 of 45 Sheets	FILE ST103	SPECIFICATION QSC84/3 BR	
Issue 2	DRAWING NUMBER	QSC 84/0015 / 1	

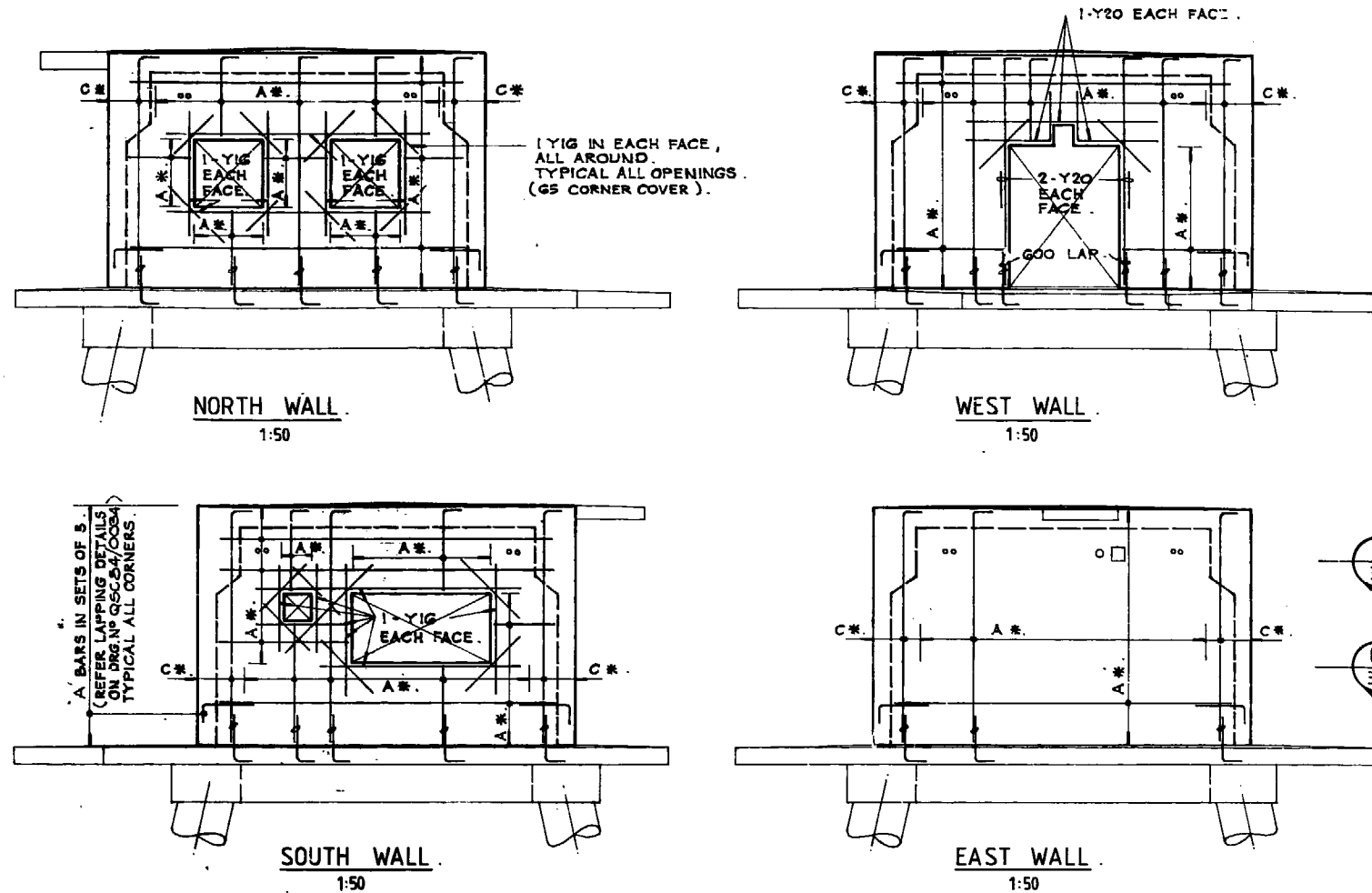
DRAWING COPY SIZE: 140 mm WHEN AT SIZE 70 mm WHEN A3 SIZE
PRINTER'S INFORMATION: DRAWING SHEET MATERIAL: A1 SIZE 110G/ISO.M TRACING PAPER



FLOOR AND WALKWAY SLAB PLAN
1:50
NOTE: CROSSROADS TO BE Y12 - 200 UNLESS NOTED OTHERWISE.



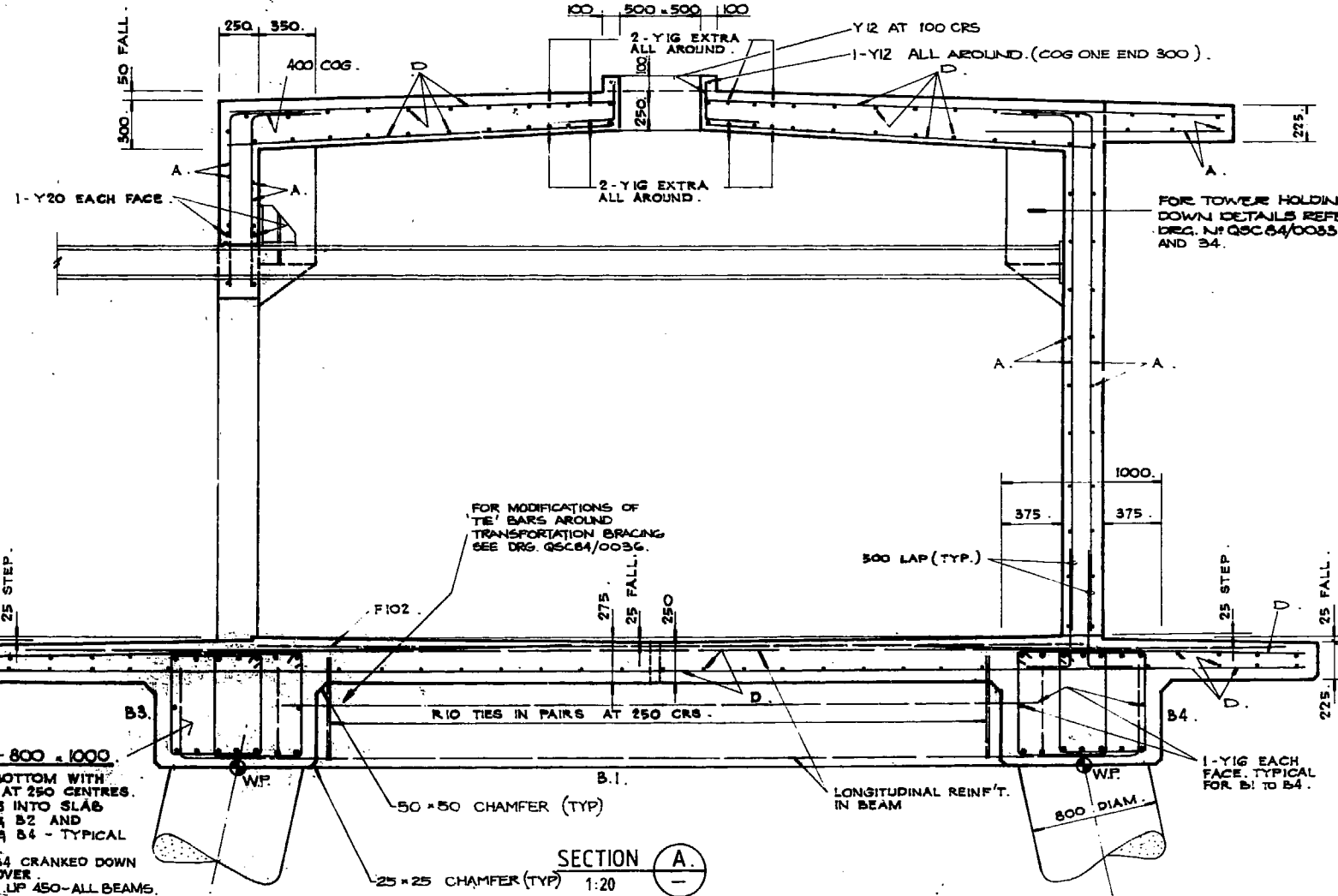
ROOF SLAB PLAN
1:50



REINFORCEMENT LEGEND		
TAG.	BAR	SPACING
A.	Y12	200 CRS.
B.	Y12	150 CRS.
C.	Y12	100 CRS.
D.	Y16	250 CRS.
E.	Y16	150 CRS.
F.	Y16	120 CRS.

* SIGNIFIES REINFORCEMENT TO BOTH FACES IN WALLS AND TOP AND BOTTOM SURFACES IN SLABS.

DRG. No. **CV-3-532**
Sheet **6** of **45** Sheets
Issue **2**



SECTION A-A
1:20

AMENDMENT

Wholohan Grill + Partners
SYDNEY SALE
PRINCIPAL *W. Pasko* 5/12/14

Department of Housing and Construction

DESIGNED *W.P.*
DRAWN *J.C.*
CHECKED *d.m.*

D.P.L. *A. ...*
HEAD OF DISCIPLINE
PROJECT MANAGER *...*
DIRECTOR *...*

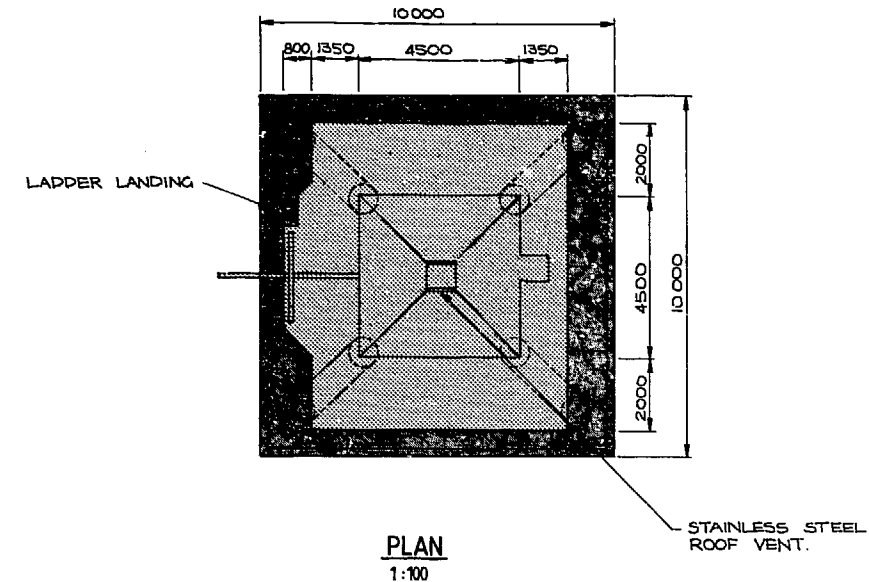
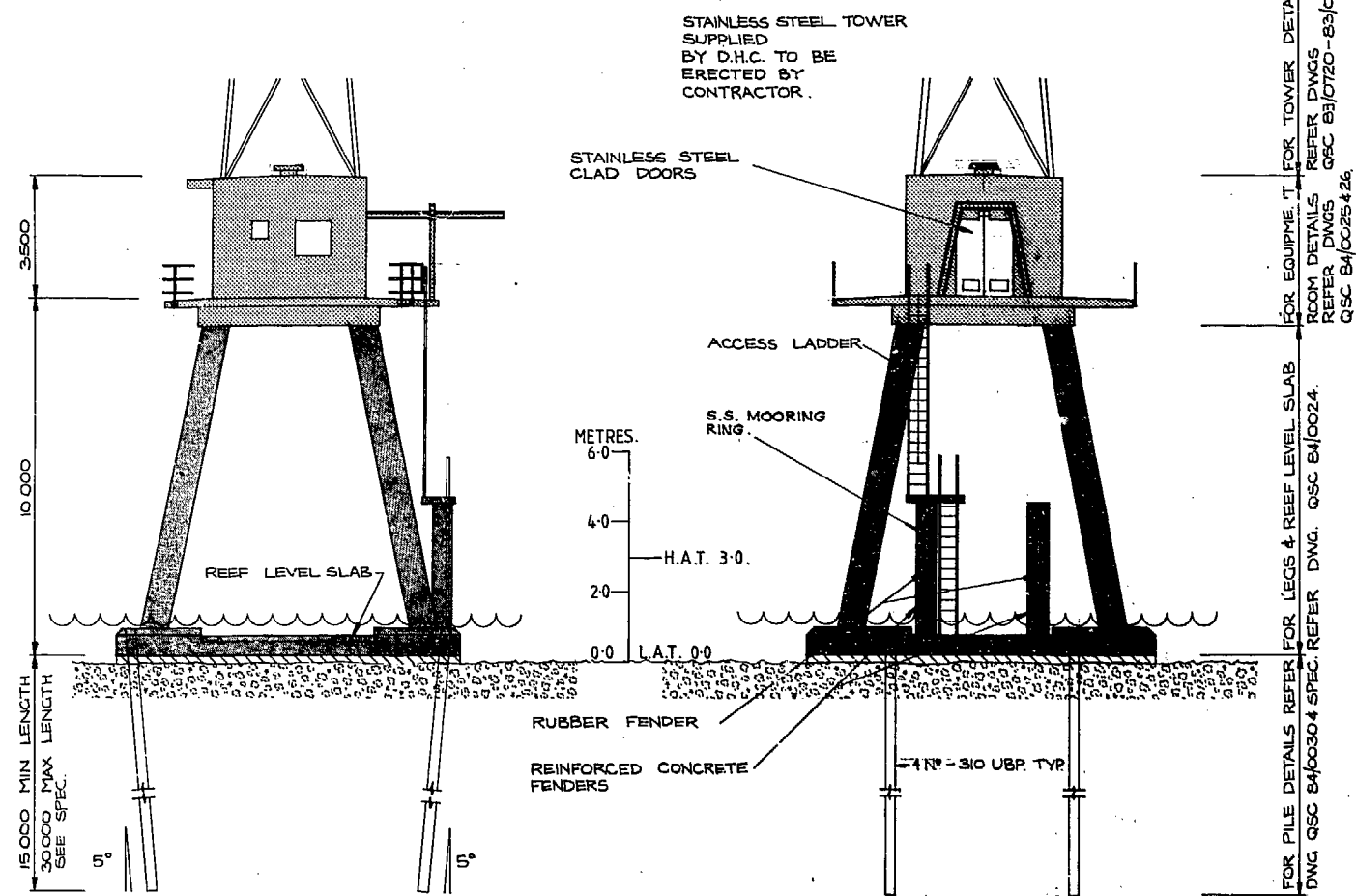
**HYDROGRAPHERS PASSAGE
PROVISION OF
NAVIGATIONAL AIDS
WHITE TIP (REAR) & CREAL
REEFS
EQUIPMENT ROOM
STRUCTURAL DETAILS**

FOR DEPARTMENT OF TRANSPORT
SCALE DATE SHEET REFERENCE
AS SHOWN
FILE SPECIFICATION
ST103 QSC84/3 BR
DRAWING NUMBER
QSC 84/0017
PAGE NUMBER:

DRAWING COPY SIZE: 140 mm WHEN AT SIZE 70 mm WHEN AS SIZE
PRINTERS INFORMATION: A1 SIZE 1100/SQ.M TRACING PAPER

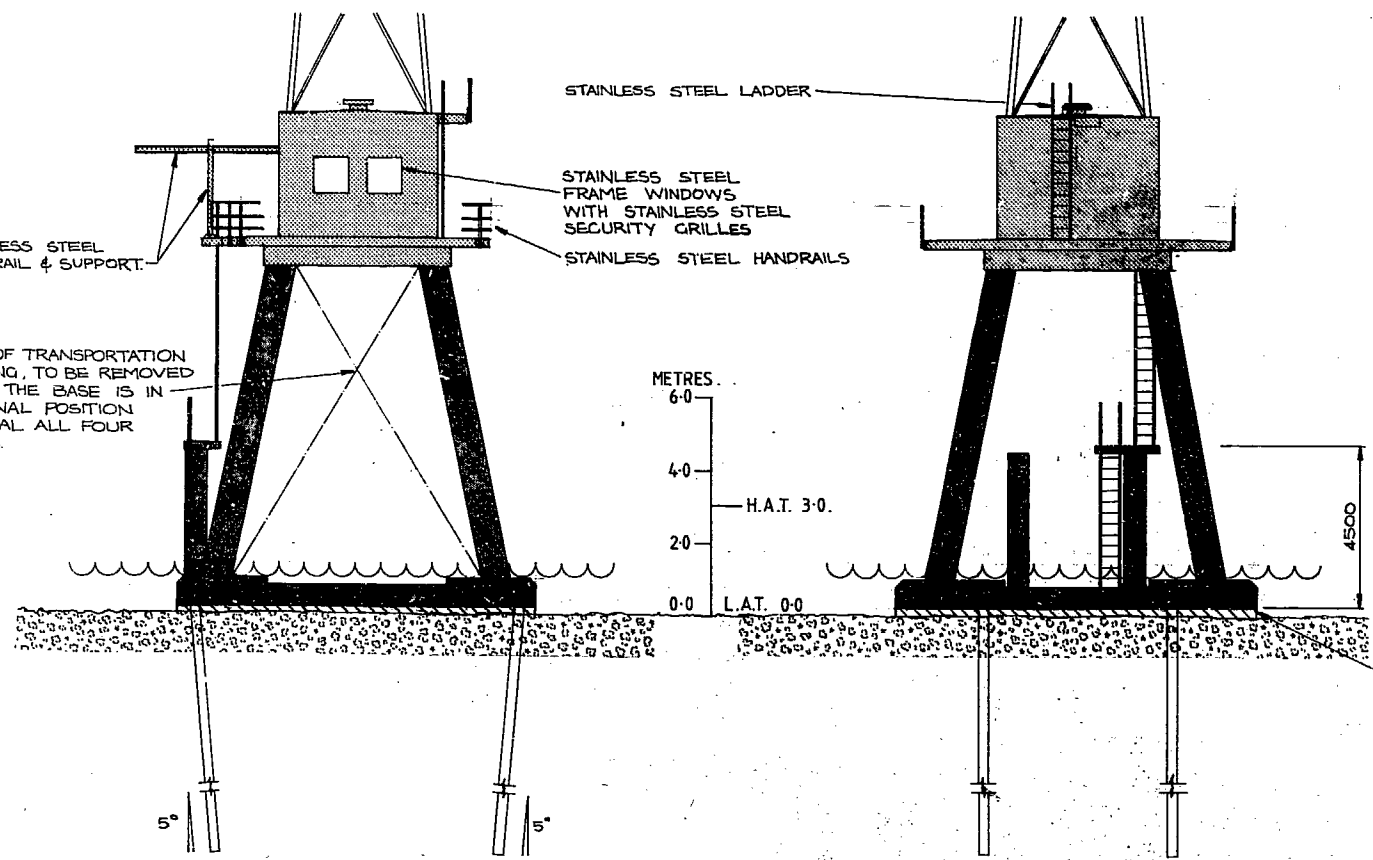


LITTLE BUGGATI REEF DRAWINGS



NORTH ELEVATION
1:100

WEST ELEVATION
1:100



SOUTH ELEVATION
1:100

EAST ELEVATION
1:100

DRAWING COPY SIZE:
140 mm. WHEN A1 SIZE
70 mm. WHEN A3 SIZE

PRINTER'S INFORMATION:
DRAWING SHEET MATERIAL. A1 SIZE 110G/SQ.M TRACING PAPER

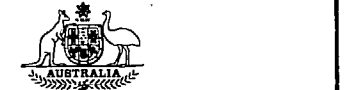


AMENDMENT

Wholohan Grill + Partners

SYDNEY SALE

PRINCIPAL *W. Parker* 8/16/84



Department of Housing and Construction

DESIGNED *M. J. ...*

DRAWN *[Signature]*

CHECKED *[Signature]*

D.P.L. *A. ...*

HEAD OF DISCIPLINE

PROJECT MANAGER *[Signature]*

DIRECTOR *[Signature]*

**HYDROGRAPHERS PASSAGE
PROVISION OF
NAVIGATIONAL AIDS
LITTLE BUGATTI REEF
GENERAL ARRANGEMENT**

DRG. No. **CN-3-332**

AS SHOWN DATE SHEET REFERENCE

Sheet **12** of **45** Sheets

FILE SPECIFICATION
ST103 QSC 84/3 BR

DRAWING NUMBER
QSC 84/0023

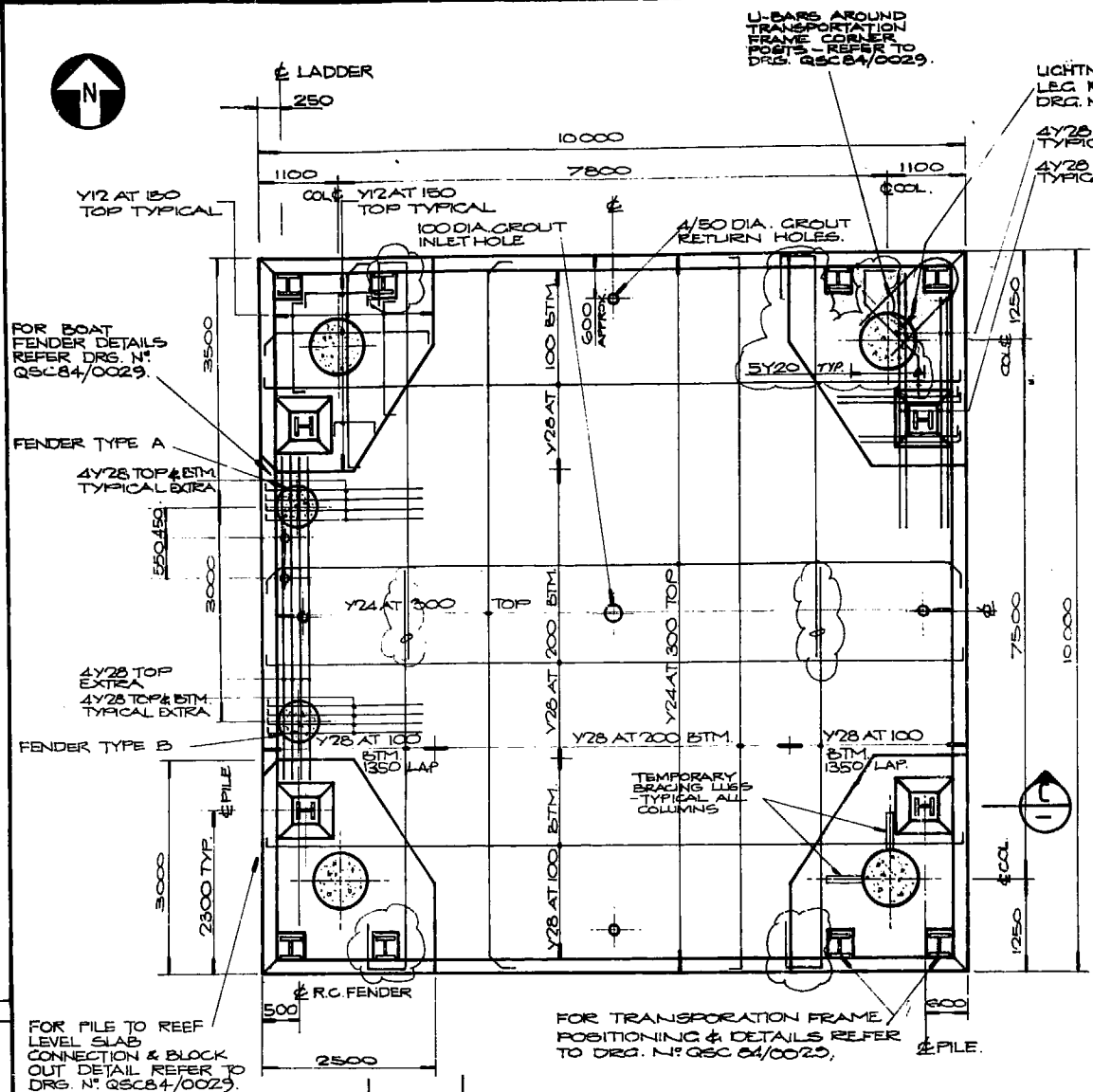
Issue **2**

FOR DEPARTMENT OF TRANSPORT

SCALE DATE SHEET REFERENCE

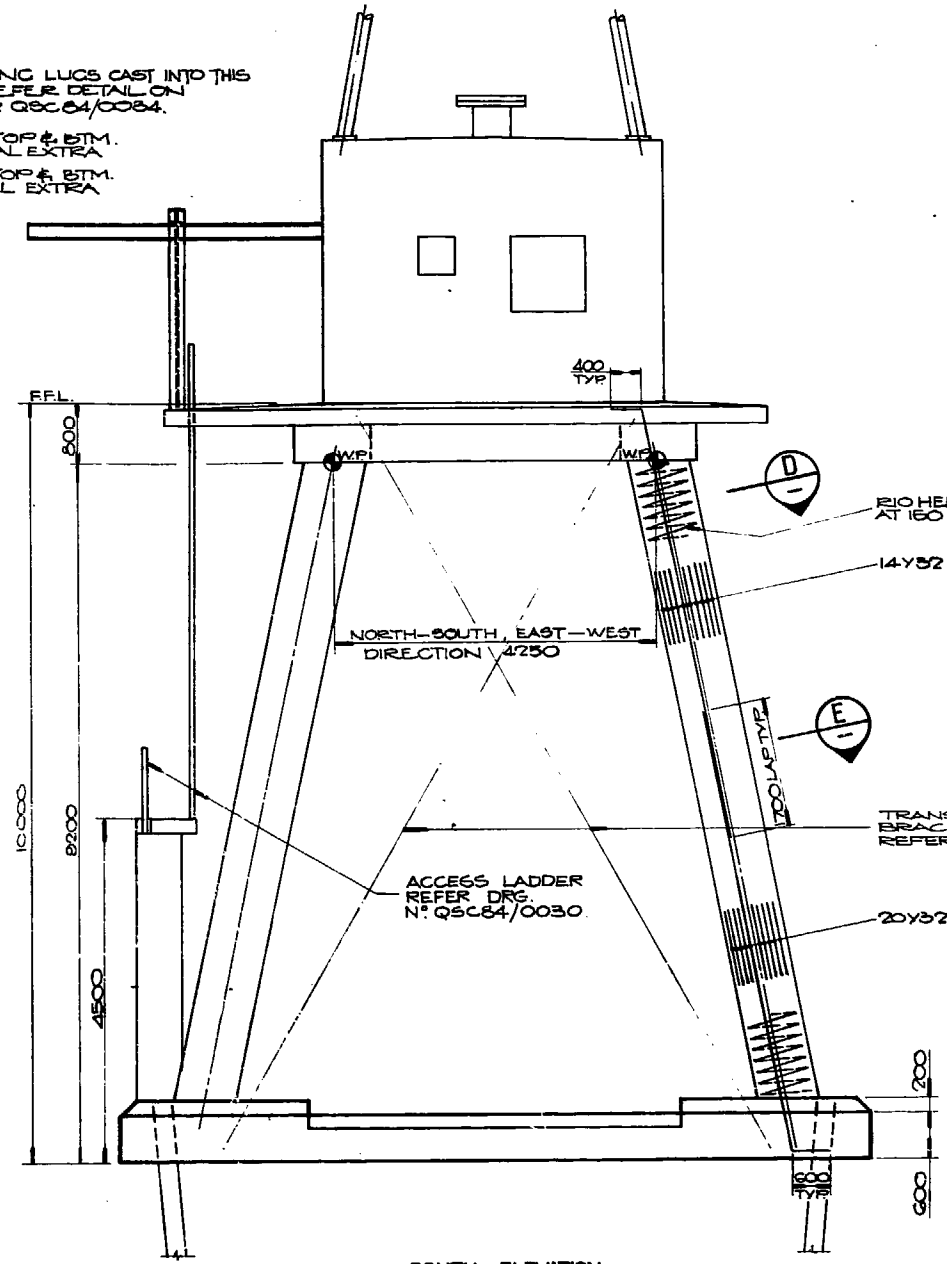
DRAWING NUMBER
QSC 84/0023

PAGE NUMBER:

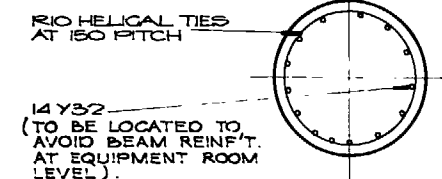


REEF LEVEL SLAB PLAN
1:50

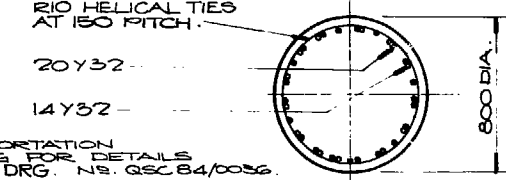
NOTE: BARS LAID IN NORTH-SOUTH DIRECTION TO BE LAID FIRST & LAST.



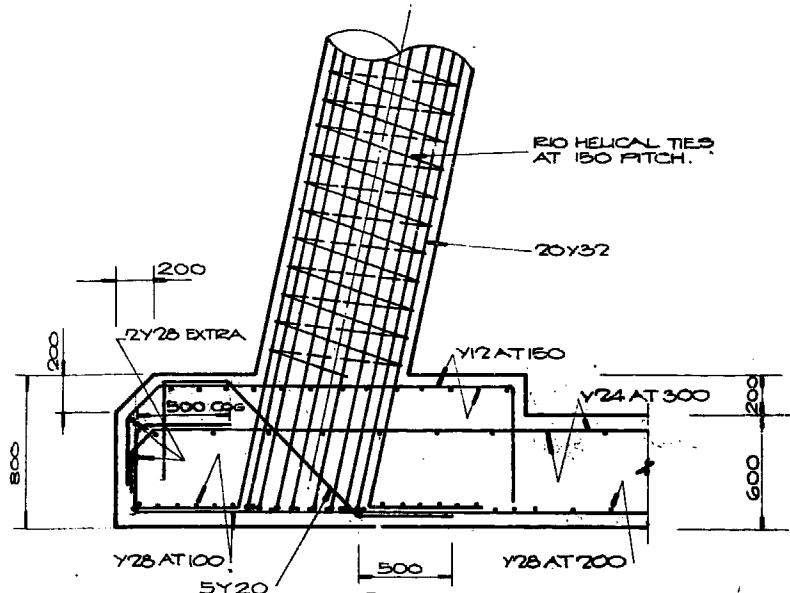
SOUTH ELEVATION
1:50



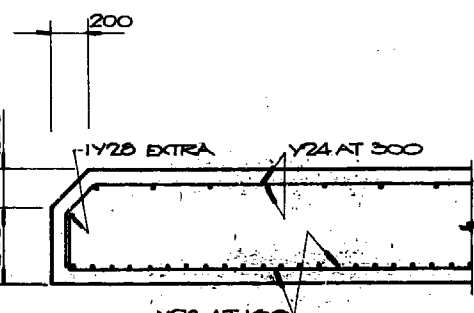
SECTION D
1:20



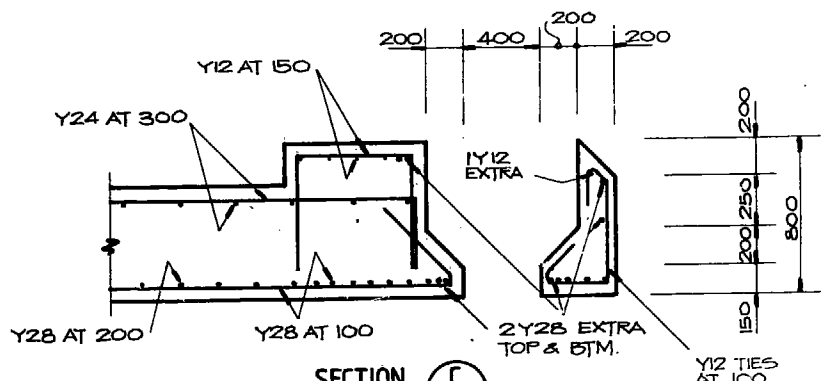
SECTION E
1:20



SECTION A
1:20



SECTION B
1:20



SECTION C
1:20

8/6/84 REEF LEVEL SLAB REINF. REVISED.

AMENDMENT

Wholohan Grill + Partners

SYDNEY SALE

PRINCIPAL *W. Parker* 8/16/84

Department of Housing and Construction

DESIGNED *[Signature]*

DRAWN *[Signature]*

CHECKED *[Signature]*

D.P.L. *[Signature]*

HEAD OF DISCIPLINE

PROJECT MANAGER *[Signature]*

DIRECTOR *[Signature]*

HYDROGRAPHERS PASSAGE
PROVISION OF
NAVIGATIONAL AIDS
LITTLE BUGATTI REEF
REEF LEVEL LAYOUT &
STRUCTURAL DETAILS

FOR DEPARTMENT OF TRANSPORT

SCALE AS SHOWN DATE SHEET REFERENCE

FILE SPECIFICATION

ST103 QSC 84/3 BR

DRAWING NUMBER

DRG. No. CN-3-332

Sheet 13 of 45 Sheets

Issue 2

QSC 84/0024/11

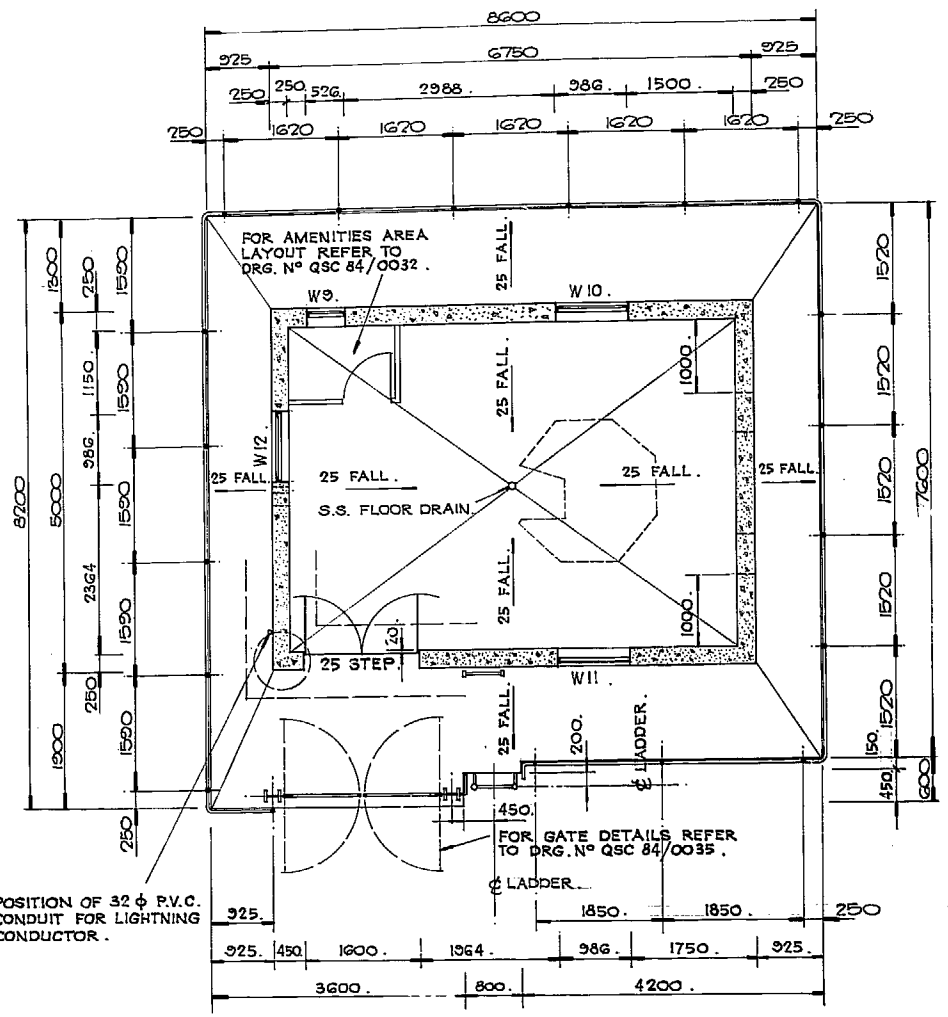
PAGE NUMBER:

DRAWING COPY SIZE: 140 mm WHEN AT SIZE 70 mm WHEN A3 SIZE

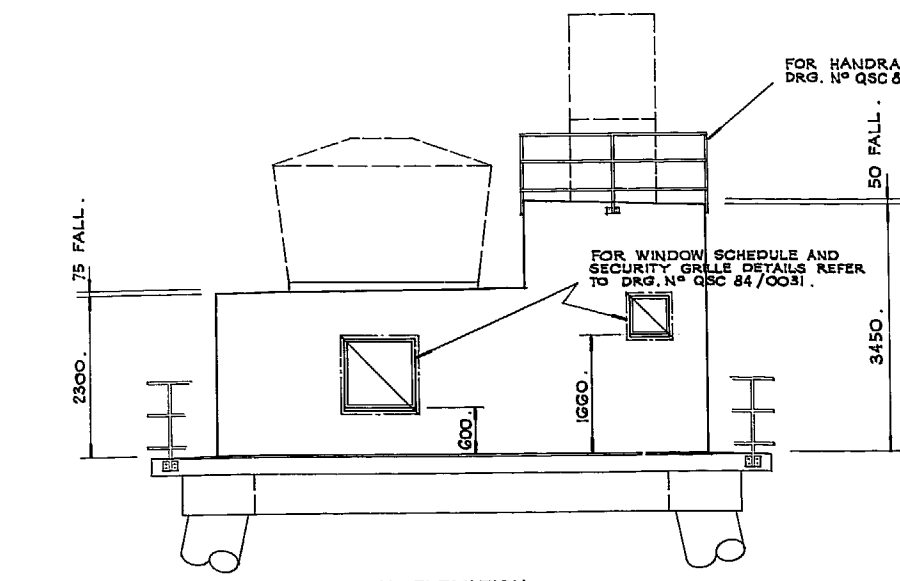
PRINTERS INFORMATION: DRAWING SHEET MATERIAL: A1 SIZE 110G/SQ.M TRACING PAPER



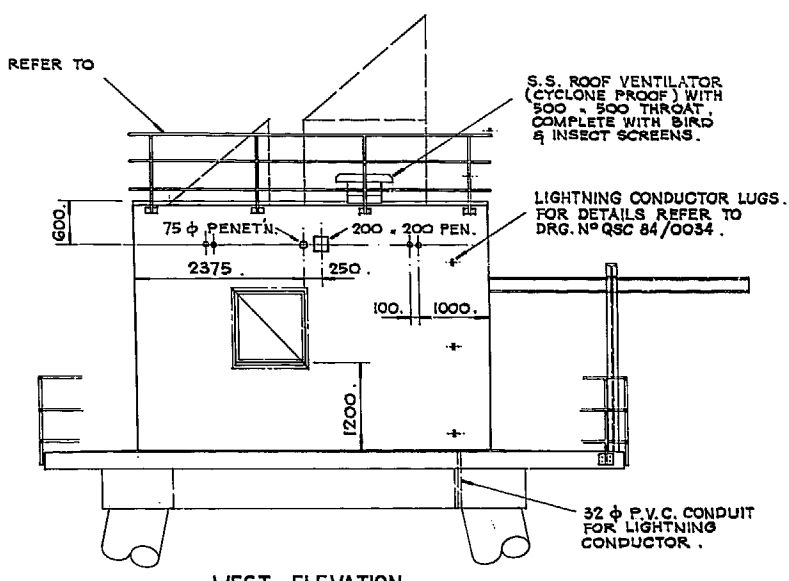
WHITE TIP REEF FRONT DRAWINGS



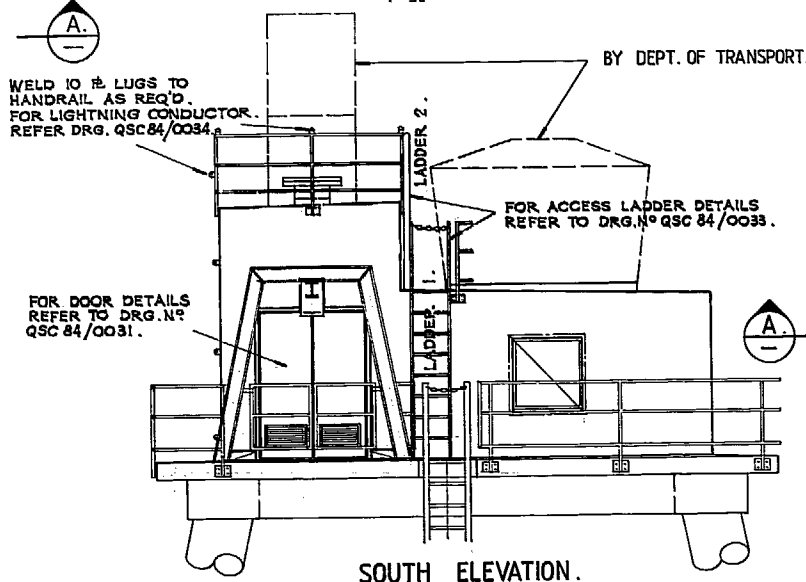
PLAN OF EQUIPMENT ROOM AND WALKWAY.
1:50



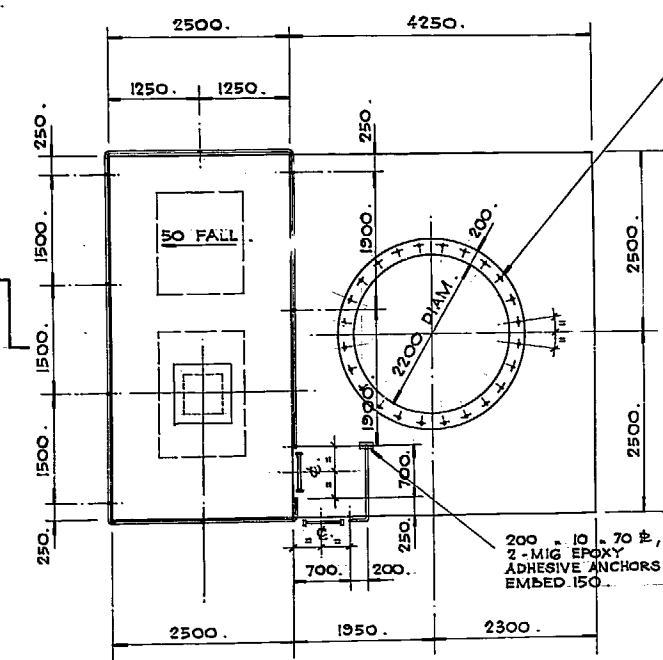
NORTH ELEVATION.
1:50



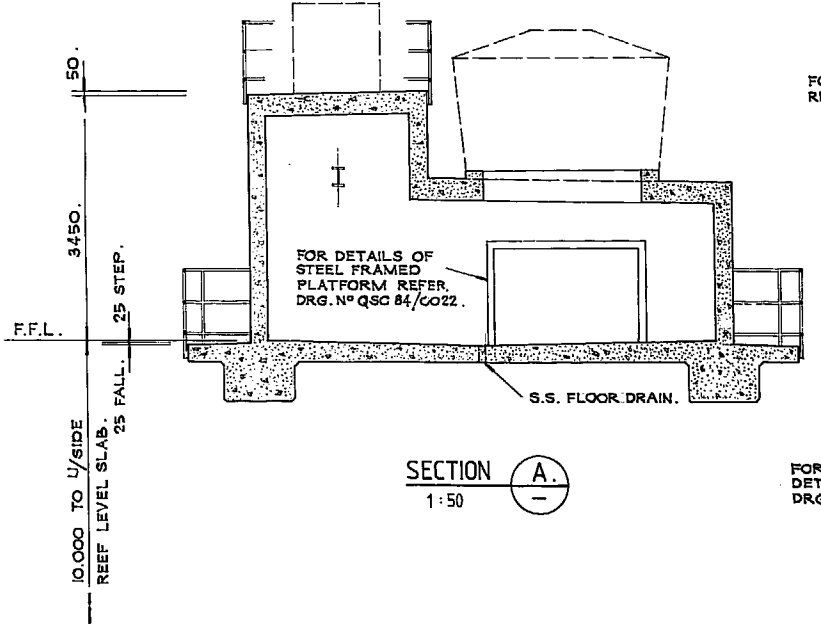
WEST ELEVATION.
1:50



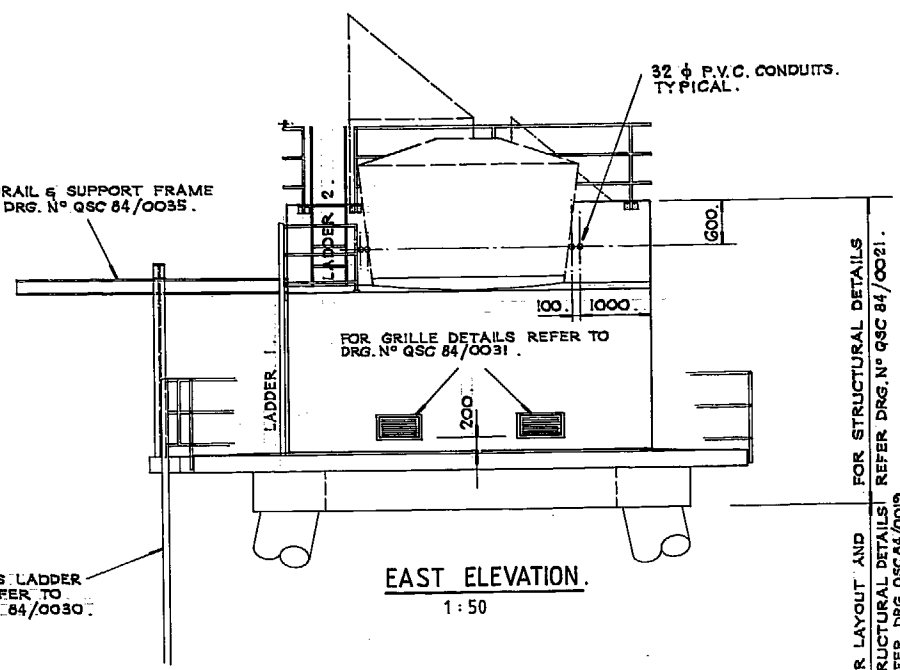
SOUTH ELEVATION.
1:50



PLAN OF EQUIPMENT ROOM ROOF.
1:50



SECTION A.
1:50



EAST ELEVATION.
1:50

NOTE.
NORTH SOUTH & EAST SIDES OF EQUIPMENT ROOM TO BE PAINTED INTERNATIONAL ORANGE -(REFER SPECIFICATION.)

AMENDMENT

Wholohan Grill + Partners
SYDNEY SALES
PRINCIPAL *U. P. ...* 8/6/84

AUSTRALIA
Department of Housing and Construction

DESIGNED *[Signature]*
DRAWN *[Signature]*
CHECKED *[Signature]*

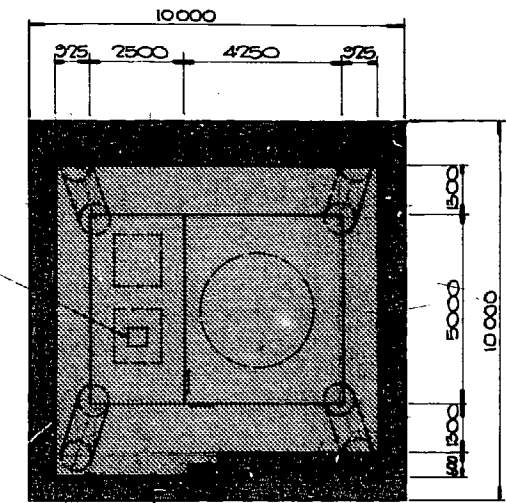
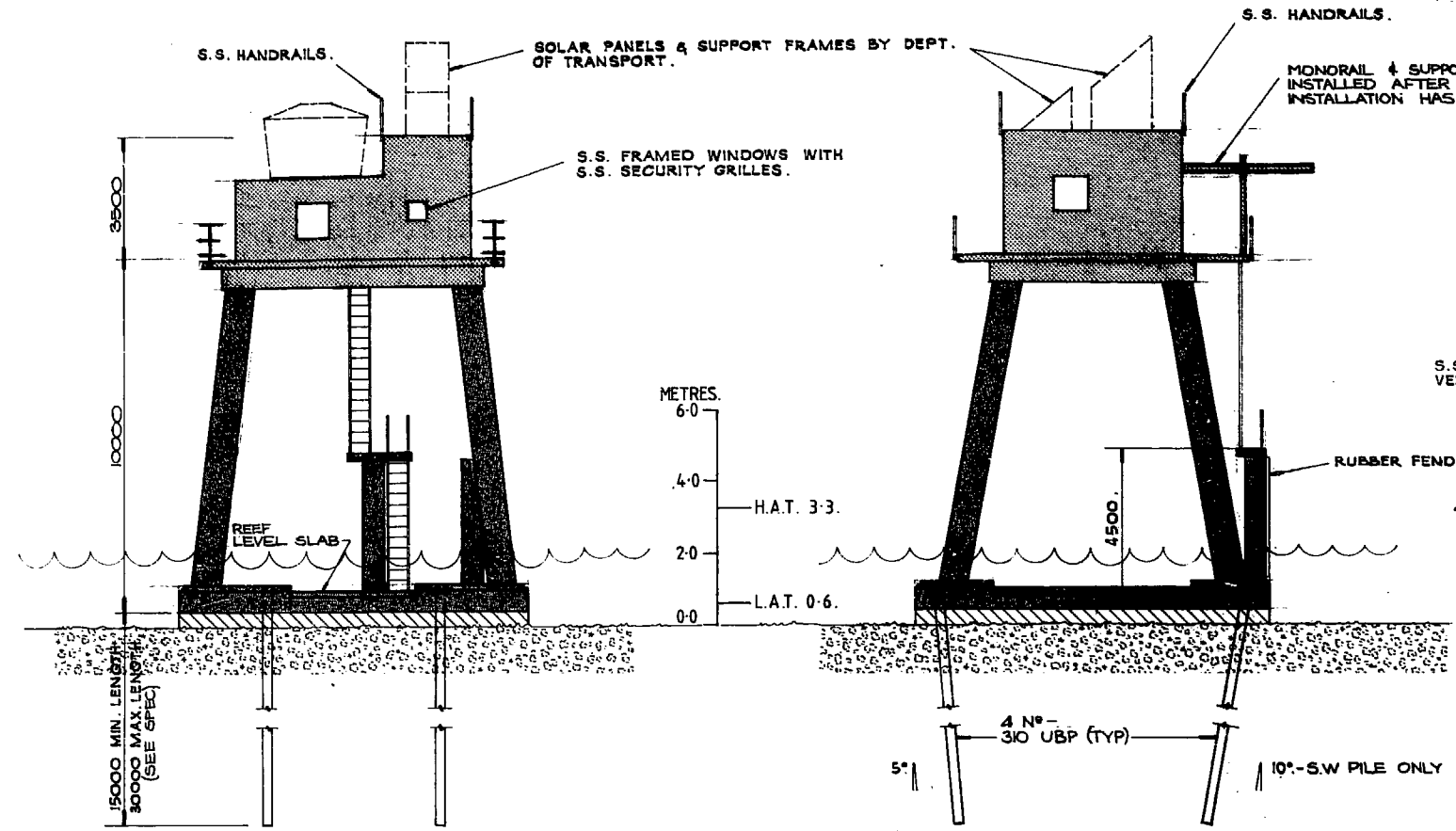
D.P.L. *R. Hemmings 20/6*
HEAD OF DISCIPLINE
PROJECT MANAGER *[Signature]*
DIRECTOR *[Signature]* 21/6/84

HYDROGRAPHERS PASSAGE PROVISION OF NAVIGATIONAL AIDS WHITE TIP (FRONT) REEF EQUIPMENT ROOM LAYOUT

FOR DEPARTMENT OF TRANSPORT
SCALE DATE SHEET REFERENCE AS SHOWN
FILE SPECIFICATION ST103 QSC84/3 BR
DRAWING NUMBER **QSC 84/0020**
PAGE NUMBER:

DRAWING COPY SIZE: 70 mm WHEN A3 SIZE 70 mm WHEN A4 SIZE
PRINTERS INFORMATION: AT SIZE 1100/500.M TRACING PAPER DRAWING SHEET MATERIAL.

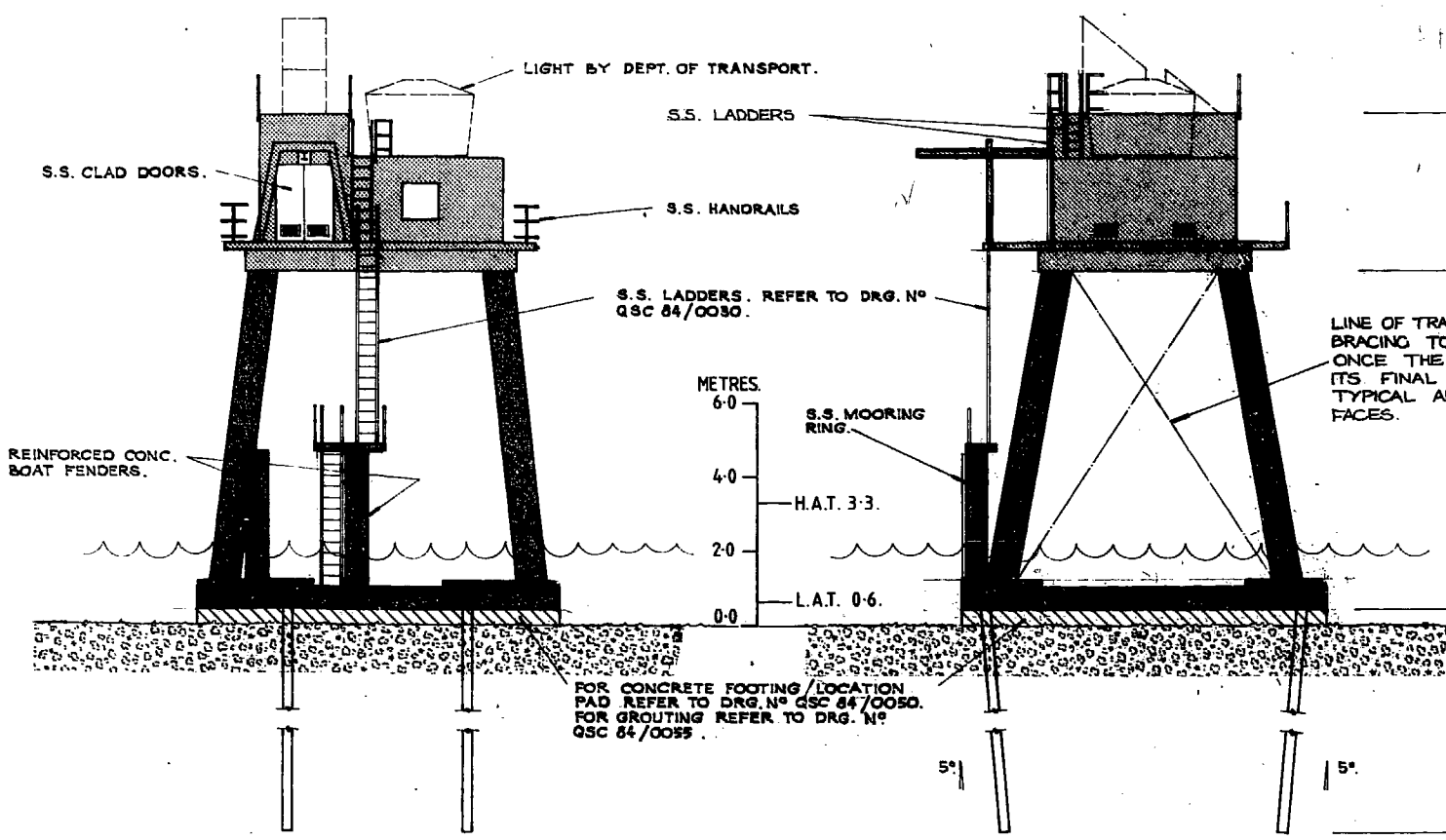




PLAN
1:300

NORTH ELEVATION
1:100

WEST ELEVATION
1:100



SOUTH ELEVATION
1:100

EAST ELEVATION
1:100

FOR LEGS & REEF LEVEL SLAB FOR EQUIPMENT ROOM DETAILS REFER TO DRG. NO. QSC 84/0029 & 30 & SPEL

FOR PILE DETAILS REFER TO DRG. NO. QSC 84/0029 & 30 & SPEL

LINE OF TRANSPORTATION BRACING TO BE REMOVED ONCE THE BASE IS IN ITS FINAL LOCATION TYPICAL ALL FOUR FACES.

DRAWING COPY SIZE:
140 mm WHEN AT SIZE
70 mm WHEN AS SIZE

PRINTERS INFORMATION:
DRAWING SHEET MATERIAL: A1 SIZE 110G/ISO/M TRACING PAPER

AMENDMENT

Wholohan Grill + Partners
SYDNEY SALES
PRINCIPAL *W. Wholohan* 8/10/84



Department of
Housing and Construction

DESIGNED	<i>[Signature]</i>
DRAWN	<i>[Signature]</i>
CHECKED	<i>[Signature]</i>
D.P.L.	<i>R. Hamilton 20/6</i>
HEAD OF DISCIPLINE	
PROJECT MANAGER	<i>[Signature]</i>
DIRECTOR	<i>[Signature]</i> 20/6/84

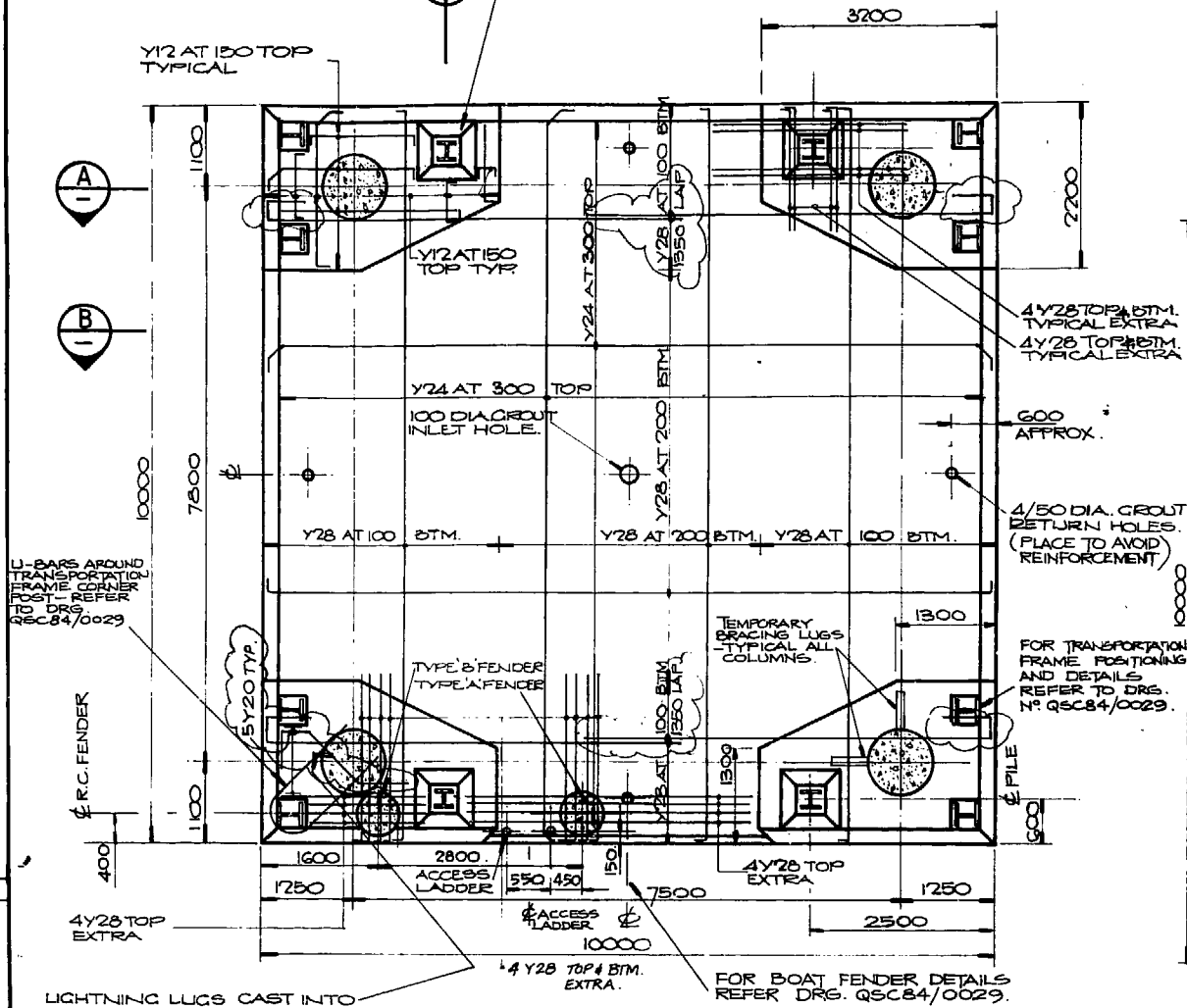
HYDROGRAPHERS PASSAGE
PROVISION OF
NAVIGATIONAL AIDS
WHITE TIP (FRONT) REEF
GENERAL ARRANGEMENT

DRG. No.	84-3-332	FOR DEPARTMENT OF TRANSPORT
Sheet	7 of 45 Sheets	SCALE DATE SHEET REFERENCE
Issue	2	FILE SPECIFICATION
		ST103 QSC 84/3 BR
		DRAWING NUMBER
		QSC 84/0018

PAGE NUMBER:

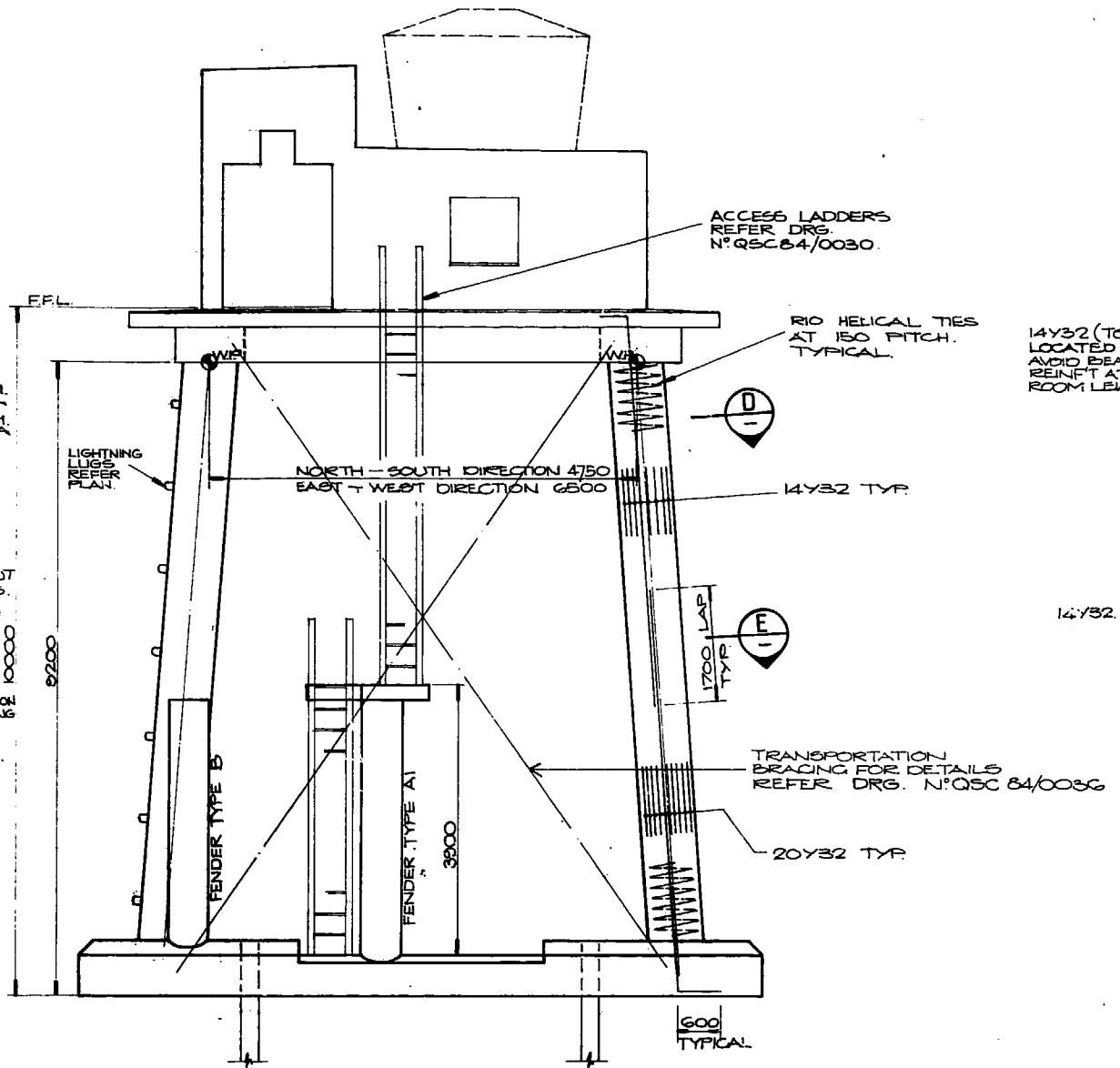


FOR FILE TO REEF SLAB CONNECTION AND BLOCKOUT DETAIL - REFER TO DRG. QSC84/0029.

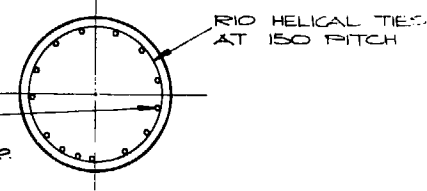


REEF LEVEL SLAB PLAN 1:50

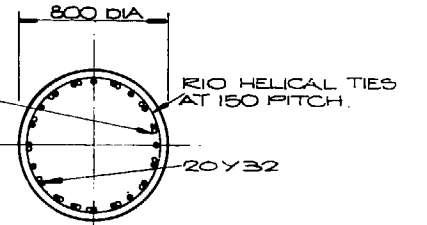
NOTE: BARS LAID IN EAST-WEST DIRECTION TO BE LAID FIRST & LAST



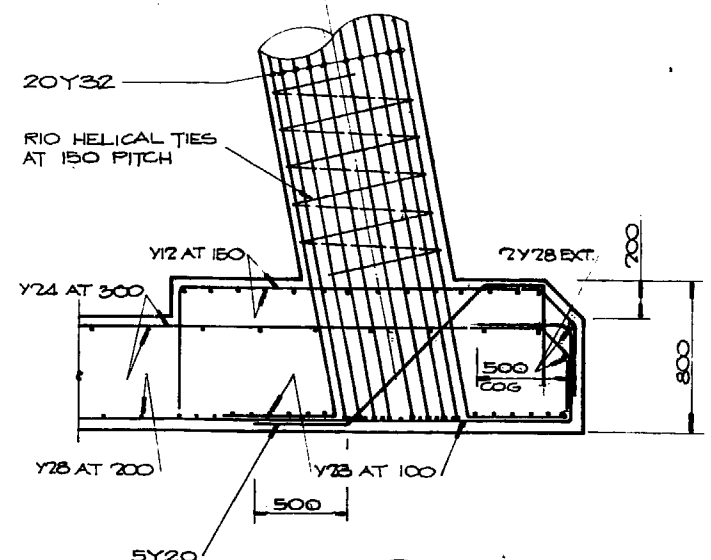
SOUTH ELEVATION 1:50



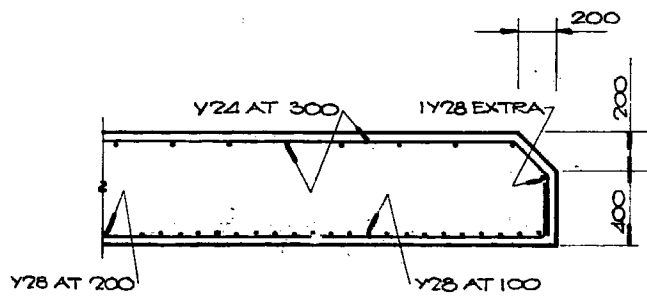
SECTION D 1:20



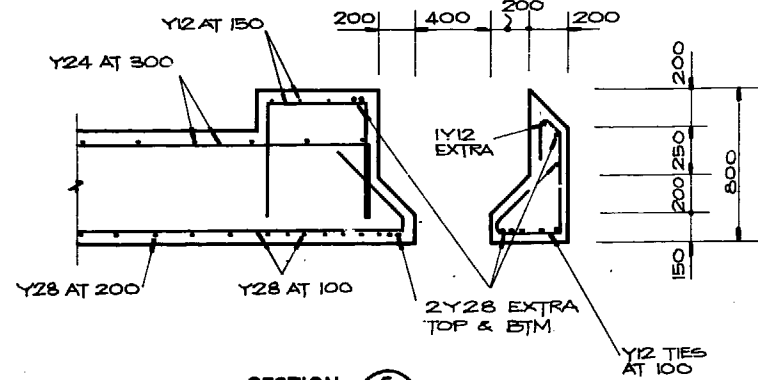
SECTION E 1:20



SECTION A 1:20

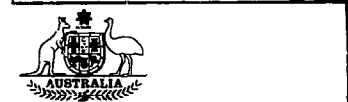


SECTION B 1:20



SECTION C 1:20

1 8/6/84 REEF LEVEL SLAB REINF. REVISED
 AMENDMENT
Wholohan Grill + Partners
 SYDNEY SALE
 PRINCIPAL *[Signature]* 8/16/84



Department of Housing and Construction

DESIGNED *[Signature]*
 DRAWN *[Signature]*
 CHECKED *[Signature]*
 D.P.L. *[Signature]*
 HEAD OF DISCIPLINE
 PROJECT MANAGER *[Signature]*
 DIRECTOR *[Signature]*

**HYDROGRAPHERS PASSAGE
 PROVISION OF
 NAVIGATIONAL AIDS
 WHITE TIP (FRONT) REEF
 REEF LEVEL LAYOUT &
 STRUCTURAL DETAILS**

DRG. No. **CH-3-332**
 Sheet **8** of **45** Sheets
 Issue **2**

FOR DEPARTMENT OF TRANSPORT
 SCALE DATE SHEET REFERENCE
 AS SHOWN
 FILE SPECIFICATION
 ST103 QSC 84/3 BR
 DRAWING NUMBER
QSC 84/0019 / 1

PAGE NUMBER:

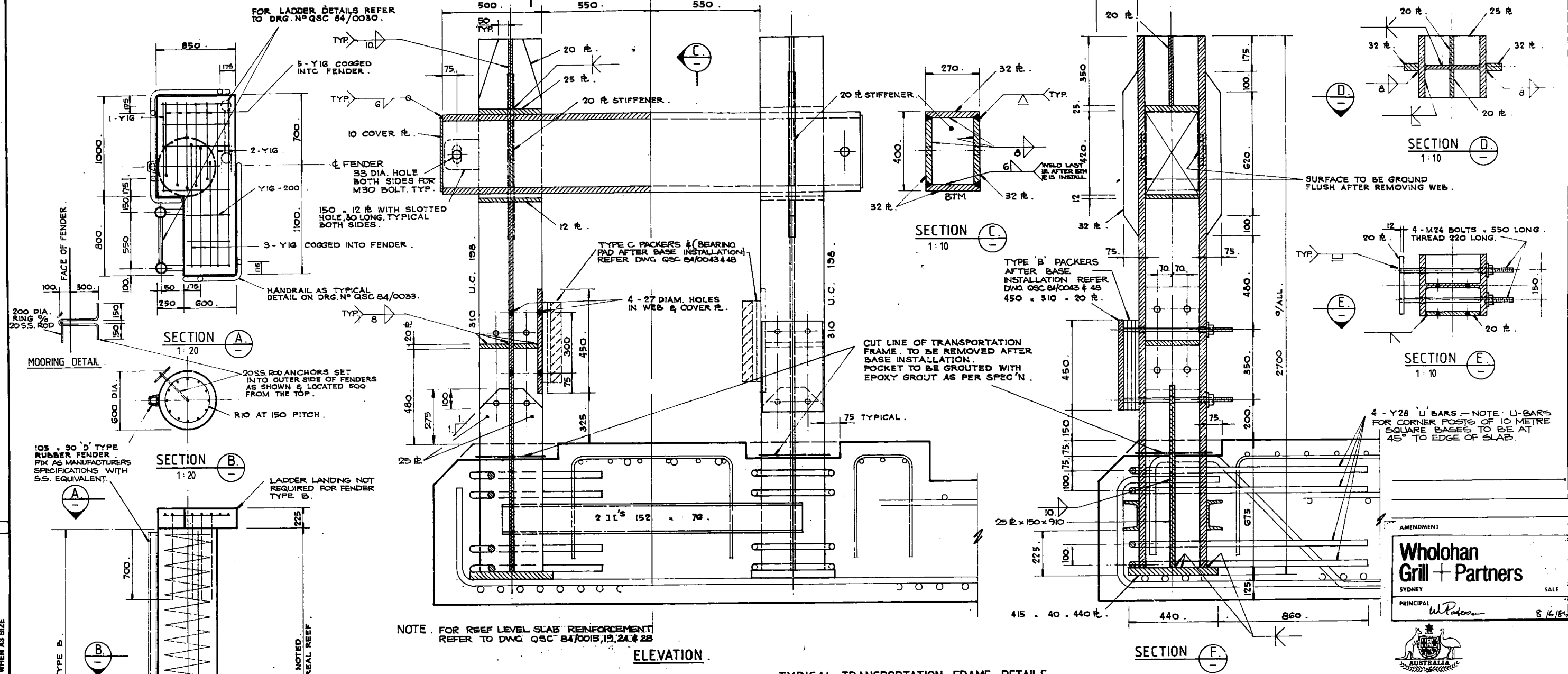
DRAWING COPY SIZE: 140 mm WHEN A1 SIZE 70 mm WHEN A3 SIZE

PRINTERS INFORMATION: DRAWING SHEET MATERIAL: A1 SIZE 110G/50.M TRACING PAPER



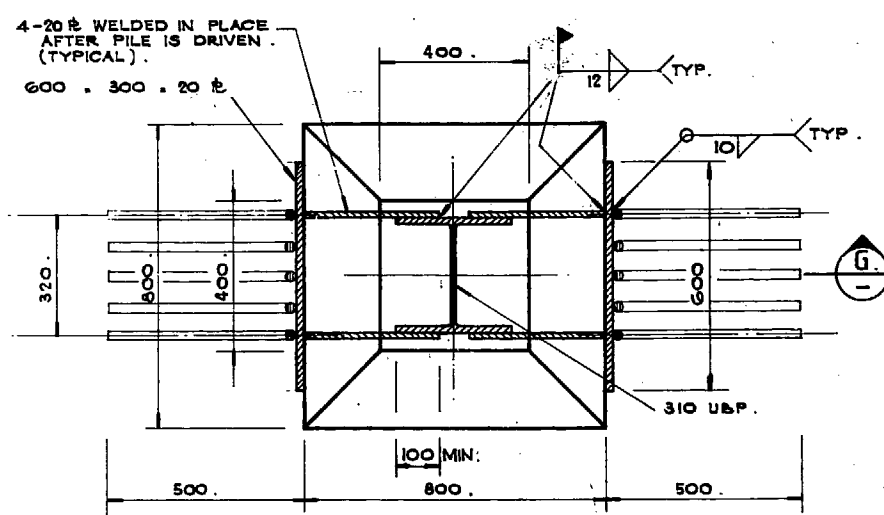
GENERAL DRAWINGS

FRAMED 7800 FROM C TO C OF TRANSPORTATION FRAME
SYMMETRICAL ABOUT C OF REEF LEVEL SLAB



ELEVATION

TYPICAL TRANSPORTATION FRAME DETAILS



PLAN ON BLOCKOUT

TYPICAL PILE CONNECTION DETAILS

NOTE: BLOCKOUT TO BE FULLY GROUTED WITH CONCRETE GROUT AS PER SPECIFICATION AFTER WELDING LOCATING R'S TO PILE.

NOTE: ALL WELDS TO BE 6mm. CONTINUOUS FILLET WELDS UNLESS NOTED OTHERWISE.

4-Y28 U-BARS - NOTE: U-BARS FOR CORNER POSTS OF 10 METRE SQUARE BASES TO BE AT 45° TO EDGE OF SLAB.

AMENDMENT

Wholohan Grill + Partners

SYDNEY SALES

PRINCIPAL *W. Pades* 8/16/85

AUSTRALIA

Department of Housing and Construction

DESIGNED	<i>W/P</i>
DRAWN	<i>J/P</i>
CHECKED	<i>D/M</i>
D.P.L.	<i>R. Conroy 20/8</i>
HEAD OF DISCIPLINE	
PROJECT MANAGER	<i>R. Conroy 20/8</i>
DIRECTOR	<i>2/16/85</i>

HYDROGRAPHERS PASSAGE PROVISION OF NAVIGATIONAL AIDS REEF LEVEL SLAB DETAILS OF PILING, FENDER AND TRANSPORTATION FRAME.

FOR DEPARTMENT OF TRANSPORT.	SCALE	DATE	SHEET REFERENCE
AS SHOWN			
FILE	SPECIFICATION		
ST 103	QSC 84/3 BR		
DRAWING NUMBER			
QSC 84/0029			
PAGE NUMBER:			

DRG. No. CN-3-332
Sheet 18 of 45 Sheets
Issue 2

DRAWING COPY SIZE: 140 mm WHEN A1 SIZE 70 mm WHEN A3 SIZE

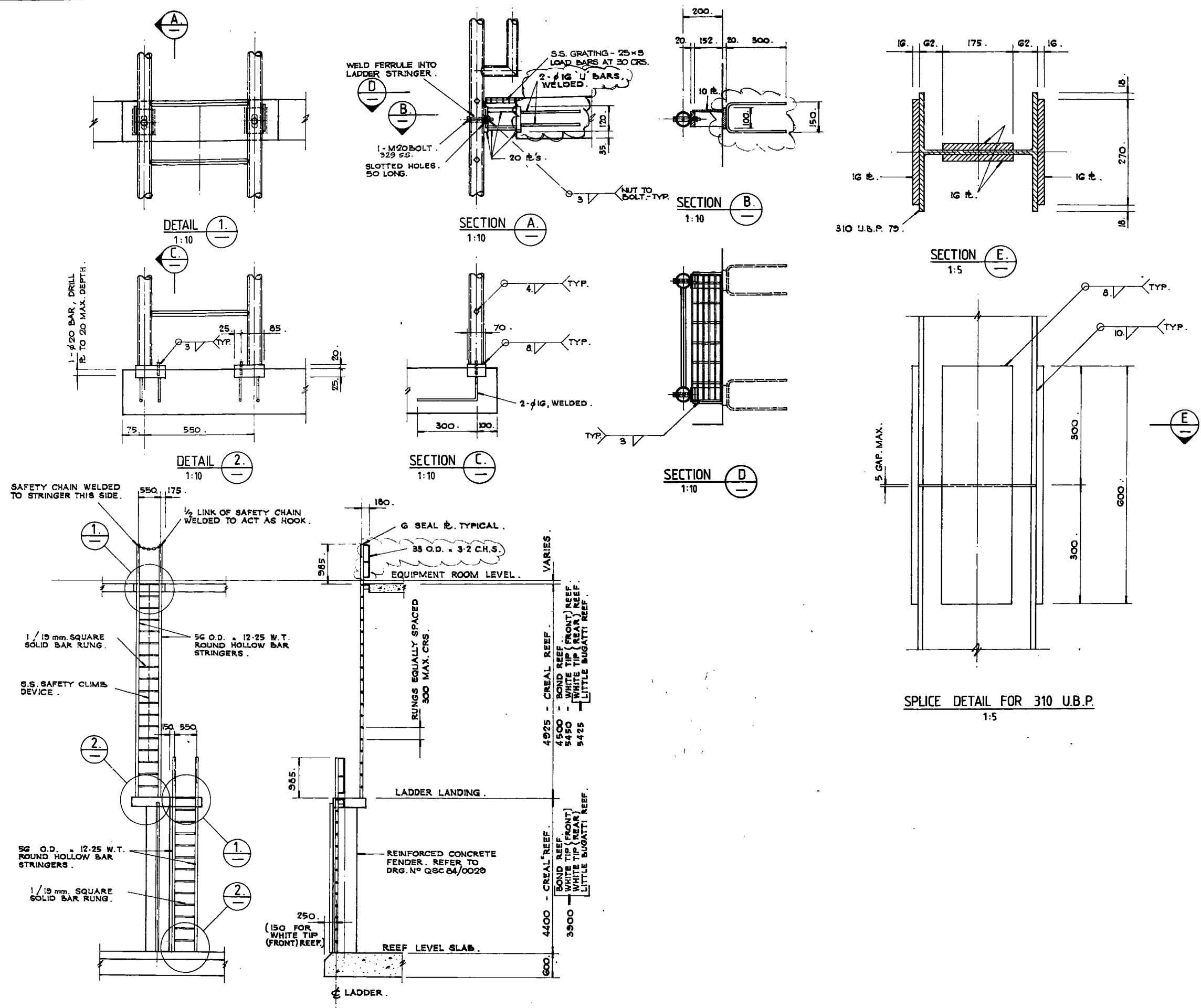
PRINTER'S INFORMATION: A1 SIZE 110G/SQ.M TRACING PAPER DRAWING SHEET MATERIAL.

TYPICAL CONCRETE FENDER DETAIL 1:20
FENDER TYPE 'A' AS DRAWN - FENDER TYPE 'A1' OPPOSITE HAND IN PLAN 'B' AS NOTED.

1:10

DRAWING COPY SIZE:
140 mm WHEN AT SIZE
70 mm WHEN AS SIZE

PRINTERS INFORMATION:
DRAWING SHEET MATERIAL: A1 SIZE 110G/SQ.M TRACING PAPER



REEF LEVEL SLAB TO EQUIPMENT ROOM ACCESS LADDER DETAILS. 1:50

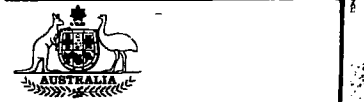
NOTE. ALL WELDS TO BE 6mm. CONTINUOUS FILLET WELDS UNLESS NOTED OTHERWISE.
ALL LADDER & LADDER COMPONENTS TO BE 316 S.S. UNO.

1 8684 TOP LADDER ATTACHMENT MODIFIED. DUMMY HANDRAIL AT TOP OF LADDER ADDED

AMENDMENT

Wholohan Grill + Partners
SYDNEY SALES

PRINCIPAL *W. Peterson* 8/16/84



Department of Housing and Construction

DESIGNED *[Signature]*
DRAWN *[Signature]*
CHECKED *[Signature]*

D.P.L. *R. Borsini 2/16*
HEAD OF DISCIPLINE

PROJECT MANAGER *[Signature]*
DIRECTOR *[Signature]* 2/16/84

HYDROGRAPHERS PASSAGE
PROVISION OF
NAVIGATIONAL AIDS
ACCESS LADDERS AND
PILE SPLICE DETAIL.

FOR DEPARTMENT OF TRANSPORT.

DRG. No. **EN-3-332**
Sheet **19 of 45** Sheets
Issue **2**

SCALE DATE SHEET REFERENCE AS SHOWN
FILE SPECIFICATION ST 103. QSC 84/3 BR.
DRAWING NUMBER
QSC 84/0030/1

PAGE NUMBER: