



Australian Government
Australian Maritime Safety Authority

**GUIDE FOR ISSUE OF AN STCW 95 ENDORSEMENT
TO AN AUSTRALIAN STATE/TERRITORY
CERTIFICATE OF COMPETENCY**

Marine Engineer Class 3

Marine Engine Driver Grade 1

Marine Engine Driver Grade 2

Marine Engine Driver Grade 3

INTRODUCTION

After a series of shipping incidents throughout the world in the 1970s and 80s, investigation showed that most were attributable to human error. A significant number were traceable to inadequacies in the training and assessment of masters, officers and crew.

To help address the issue of crew training and competence, the International Maritime Organization (IMO) developed the "International Convention on Standards of Training Certification and Watch-keeping for Seafarers, 1978" (STCW78), which laid down minimum standards of training and certification for seafarers. Australia implemented STCW78 in 1984 when it came into force. This Convention is designed to cover all maritime qualifications issued by a country; However for many years prior to this, the various State marine authorities in Australia had been issuing qualifications for use in their waters based on differing standards and criteria. The Uniform Shipping Laws Code (USL Code) was developed to achieve uniformity and portability of qualifications between states and compliance with STCW 78, where applicable.

The USL Code and National Standard for Commercial Vessels (NCSV) Part D provides a common standard, allowing holders of certificates of competency issued by the State Marine Authorities to use their qualification anywhere in Australian coastal waters, within any limitations stated on the certificate.

The latest version of the STCW Convention requires certificates covered by the Convention be endorsed as complying with that Convention. AMSA, as the flag state authority, has the responsibility for this in Australia.

OBJECTIVES

This guide provides a reference for the requirements for obtaining an AMSA STCW95 endorsement to a state State/Territory certificate in order that the applicant can plan career paths and apply their personal resources in the most beneficial manner.

FURTHER INFORMATION

Further information can be obtained from:

Ship Operations and Qualifications Section
AMSA Canberra

Ph: +61 02 6279 5903

Fax: + 61 02 6279 5056

CONTENTS

Certificate - Marine Engineer Class III

STCW Endorsement - Chief Engineer on a ship of less than 3,000 kW propulsion power, up to 200 miles offshore

- Requirements for issue of endorsement
- Course details
- Sea-going service requirements
- Flow diagram

Certificate - Marine Engine Driver Grade 1 (MED 1)

STCW Endorsement - Chief engineer on a ship of less than 3,000 kW propulsion power, up to 15 miles offshore

- Requirements for issue of endorsement
- Course details
- Sea-going service requirements
- Flow diagram

Certificate - Marine Engine Driver Grade 1 (MED 1)

STCW Endorsement - Second Engineer on a ship of less than 3,000 kW propulsion power, up to 200 miles offshore

- Requirements for issue of endorsement
- Course details
- Sea-going service requirements
- Flow diagram

Marine Engine Driver Grade 2 (MED 2)

Marine Engine Driver Grade 3 (MED 3)

Application for Issue of Endorsement

Definitions & Abbreviations

State/Territory Authority Contact Information

AMSA Approved Marine College Contact Information

The information contained in this document is correct at the time of printing. However, as the requirements may change over time, interested persons should refer to the appropriate authority for the most up to date information.

©Commonwealth of Australia

This work is copyright. It may be reproduced in whole or part subject to the inclusion of an acknowledgment of the source, but not for commercial usage or sale.

CERTIFICATE - MARINE ENGINEER CLASS 3

ENDORSEMENT

STCW 95 endorsement for chief engineer on a ship of less than 3,000 kW propulsion power up to 200 miles offshore (STCW 95, Regulation III/3).

Requirements for Issue of Endorsement

To be eligible for the issue of an STCW Endorsement covering the use of the certificate in accordance with Marine Orders Part 3, the applicant must:

- (a) have a valid Australian, State or Territory class 3 certificate;
- (b) be 20 years of age or more;
- (c) have a letter from the certificate issuing authority, stating that the applicant has completed education and training that meets the standards of competence for chief engineers and second engineers on ships powered by main engine propulsion machinery of between 750 kW and 3000 kW as specified in Regulation A-III/3 of the STCW 95 Code;
- (d) have at least 39 months approved sea-going service (as calculated in accordance with MO 3) on ships over 750 kW propulsion power;
- (e) have a valid medical certificate as required by Marine Orders Part 9, Health–Medical Fitness;
- (f) have completed a state authority and/or AMSA approved short courses meeting the STCW 95 Convention requirements in basic fire fighting, personal survival techniques, elementary first aid and personal safety and social responsibilities;
- (g) have completed an AMSA approved advanced fire fighting course.

Course Details

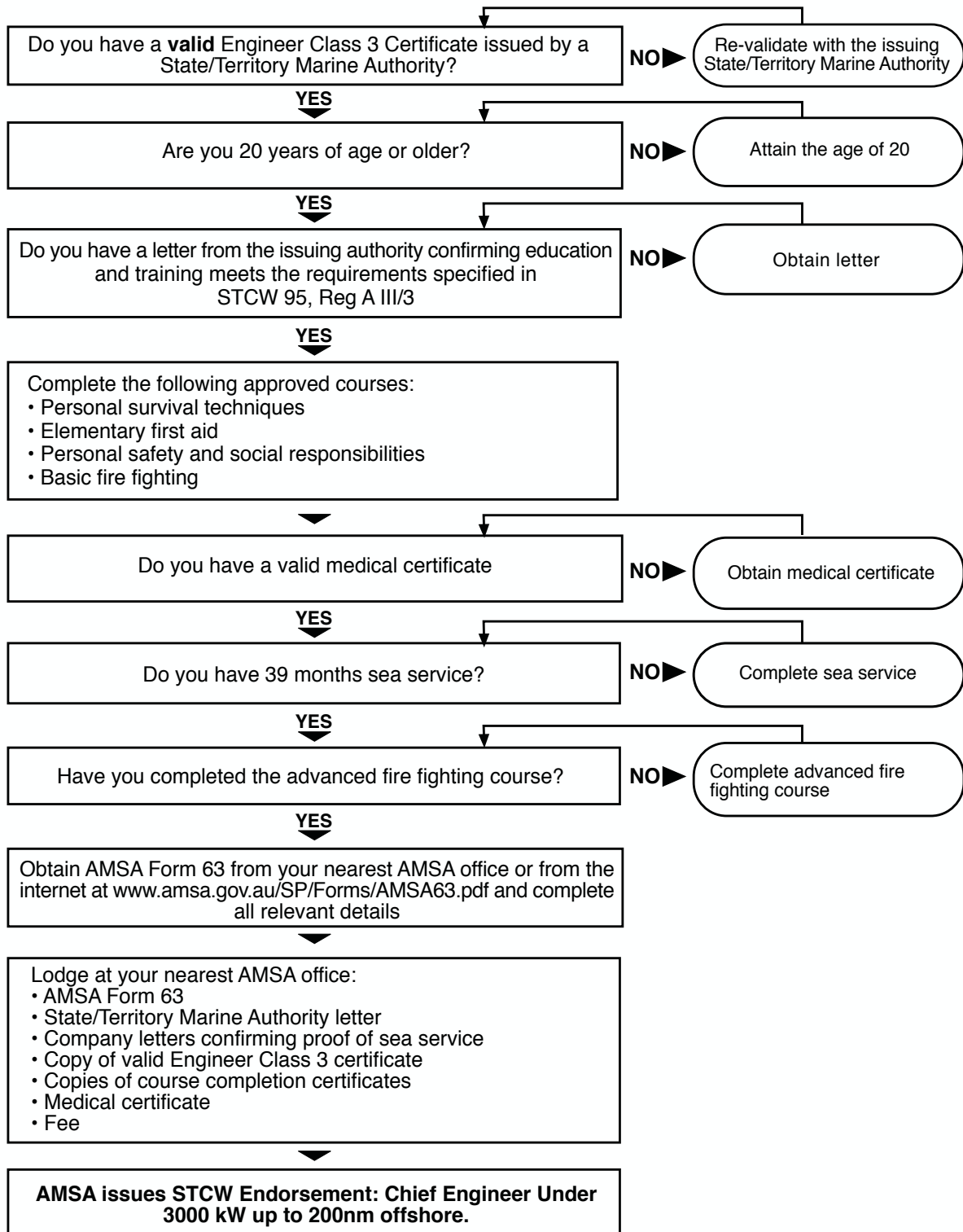
List of Courses	STCW 95 Convention Reference/Regulation
A State/Territory marine authority approved training program meeting the standards of competence specified in section A-III/3 of the STCW95 Code	A-III/3 - Mandatory minimum requirements for certification of chief engineer officers and second engineer officers on ships powered by main propulsion machinery of between 750 kW and 3,000 kW propulsion power.
Personal Survival Techniques	Table A-VI/1-1
Basic Fire Fighting	Table A-VI/1-2
Elementary First Aid	Table A-VI/1-3
Personal Safety and Social Responsibilities	Table A-VI/1-4
Advanced Fire Fighting	Table A-VI/3

Sea-going Service Requirements

The qualifying sea service for issue of this endorsement is 39 months on ships with at least 750 kW propulsion power calculated in accordance with Marine Orders Part 3.

All applicants must have fully documented evidence (substantiated by letters from the vessel's owners or managers), of all required sea service. This is to be submitted in addition to completing the relevant details on AMSA form 63.

ENGINEER CLASS 3



CERTIFICATE - MARINE ENGINE DRIVER GRADE 1

ENDORSEMENT

STCW 95 endorsement for chief engineer on a ship of less than 3000 kW propulsion power up to 15 miles offshore (STCW 95, Regulation III/3).

Requirements for Issue of Endorsement

To be eligible for the issue of an STCW Endorsement covering the use of the certificate in accordance with Marine Orders Part 3, the applicant must:

- (a) have a valid Australian, State or Territory Marine Engine Driver Grade 1 certificate;
- (b) be 20 years of age or more;
- (c) have a letter from the certificate issuing authority, stating that the applicant has completed education and training that meets the standards of competence for chief engineers and second engineers on ships powered by main engine propulsion machinery of between 750 kW and 3000 kW as specified in Regulation A-III/3 of the STCW 95 Code;
- (d) have at least 39 months approved sea-going service (as calculated in accordance with MO 3) on ships over 750 kW propulsion power;
- (e) have a valid medical certificate as required by Marine Orders Part 9, Health–Medical Fitness;
- (f) have completed a state authority and/or AMSA approved short courses meeting the STCW 95 Convention requirements in basic fire fighting, personal survival techniques, elementary first aid and personal safety and social responsibilities;
- (g) have completed an AMSA approved advanced fire fighting course.

Course Details

List of Courses	STCW 95 Convention Reference/Regulation
A State/Territory marine authority approved training program meeting the standards of competence specified in section A-III/3 of the STCW95 Code	A-III/3 - Mandatory minimum requirements for certification of chief engineer officers and second engineer officers on ships powered by main propulsion machinery of between 750 kW and 3,000 kW propulsion power.
Personal Survival Techniques	Table A-VI/1-1
Basic Fire Fighting	Table A-VI/1-2
Elementary First Aid	Table A-VI/1-3
Personal Safety and Social Responsibilities	Table A-VI/1-4
Advanced Fire Fighting	Table A-VI/3

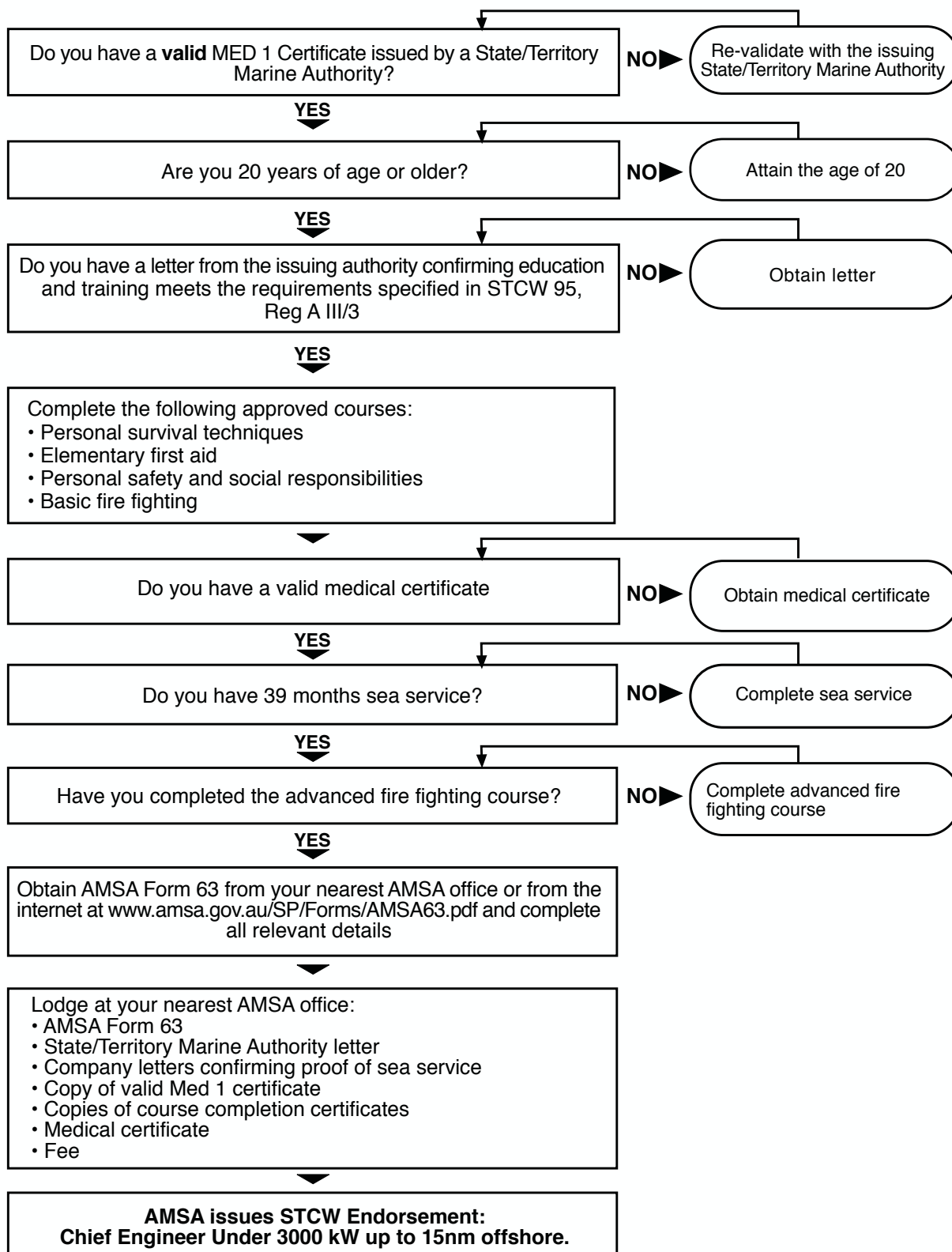
Sea-going Service Requirements

The qualifying sea service for issue of this endorsement is 39 months on ships with at least 750 kW propulsion power calculated in accordance with Marine Orders Part 3.

All applicants must have fully documented evidence (substantiated by letters from the vessel's owners or managers), of all required sea service. This is to be submitted in addition to completing the relevant details on AMSA form 63.

MED 1

Chief Engineer under 3000kW up to 15 nm offshore



CERTIFICATE - MARINE ENGINE DRIVER GRADE 1

ENDORSEMENT

STCW 95 endorsement for second engineer on a ship of less than 3000 kW propulsion power up to 200 miles offshore (STCW 95, Regulation III/3).

Requirements of Issue of Endorsement

To be eligible for the issue of an STCW Endorsement covering the use of the certificate in accordance with Marine Orders Part 3, the applicant must:

- (a) have a valid Australian, State or Territory Marine Engine Driver Grade 1 certificate;
- (b) be 20 years of age or more;
- (c) have a letter from the certificate issuing authority, stating that the applicant has completed education and training that meets the standards of competence for chief engineers and second engineers on ships powered by main engine propulsion machinery of between 750 kW and 3000 kW as specified in Regulation A-III/3 of the STCW 95 Code;
- (d) have at least 24 months approved sea-going service (as calculated in accordance with MO 3) on ships over 750 kW propulsion power;
- (e) have a valid medical certificate as required by Marine Orders Part 9, Health–Medical Fitness; ;
- (f) have completed a state authority and/or AMSA approved short courses meeting the STCW 95 Convention requirements in basic fire fighting, personal survival techniques, elementary first aid and personal safety and social responsibilities;
- (g) have completed an AMSA approved advanced fire fighting course.

Course Details

List of Courses	STCW 95 Convention Reference/Regulation
A State/Territory marine authority approved training program meeting the standards of competence specified in section A-III/3 of the STCW95 Code	A-III/3 - Mandatory minimum requirements for certification of chief engineer officers and second engineer officers on ships powered by main propulsion machinery of between 750 kW and 3,000 kW propulsion power.
Personal Survival Techniques	Table A-VI/1-1
Basic Fire Fighting	Table A-VI/1-2
Elementary First Aid	Table A-VI/1-3
Personal Safety and Social Responsibilities	Table A-VI/1-4
Advanced Fire Fighting	Table A-VI/3

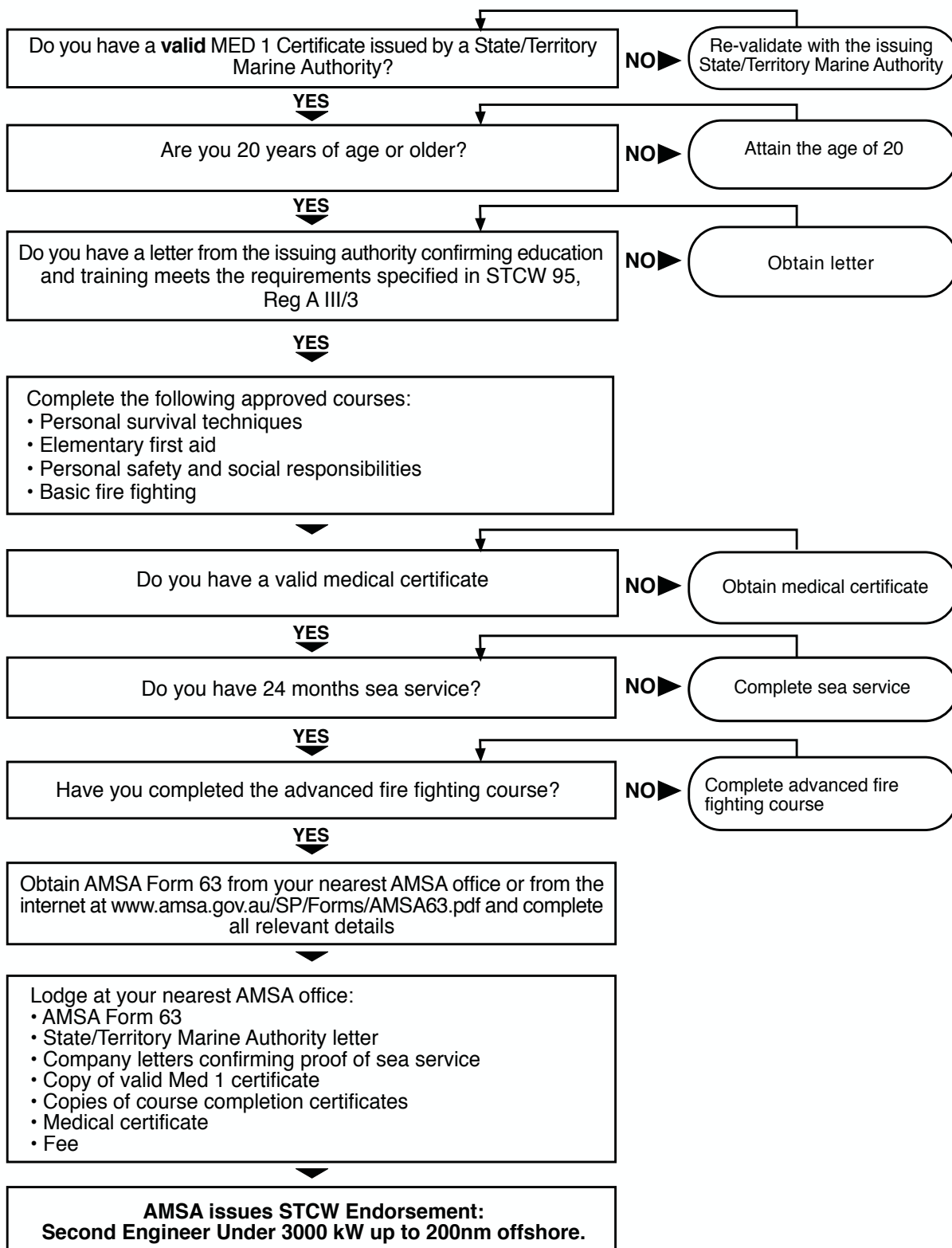
Sea-going Service Requirements

The qualifying sea service for issue of this endorsement is 24 months on ships with at least 750 kW propulsion power calculated in accordance with Marine Orders Part 3.

All applicants must have fully documented evidence (substantiated by letters from the vessel's owners or managers), of all required sea service. This is to be submitted in addition to completing the relevant details on AMSA form 67.

MED 1

Second Engineer under 3000kW up to 200nm offshore



MARINE ENGINE DRIVER GRADE 2

Not eligible for issue of an STCW endorsement as State/Territory certificate is for ships below the STCW 95 Convention propulsion power.

MARINE ENGINE DRIVER GRADE 3

Not eligible for issue of an STCW endorsement as State/Territory certificate is for ships below the STCW 95 Convention propulsion power.

APPLICATION FOR ISSUE OF ENDORSEMENT

Applicants are to be required to submit the following for assessment for eligibility for issue of an STCW endorsement on their state/territory issued certificate:

- completed form AMSA 63, Application for a Certificate and/or endorsement, which is available from AMSA's website www.amsa.gov.au/Forms/AMSA63.pdf (only applications submitted on this form are eligible for assessment);
- a copy of all pages of the valid State/NT certificate;
- letter of confirmation from the issuing authority stating the standards met by the certificate;
- evidence of meeting the required medical fitness standards;
- details of sea service performed; and
- prescribed fee.

Note: AMSA will not issue STCW95 endorsements on certificates of recognition or restricted certificates of any kind.

DEFINITIONS & ABBREVIATIONS

Approved Sea Going Service

As defined in Marine Orders Part 3, Appendix 3.

STCW95 Convention

International Convention on Standards of Training, Certification and Watch-keeping for Seafarers, 1978, as Amended.

kW Power

As defined in the STCW Convention.

STATE/TERRITORY MARINE AUTHORITY CONTACT INFORMATION

For information on approved courses of training for engineer class III, MED 1, MED 2 & MED 3 and associated short courses, contact the appropriate Maritime Authority in your home State.

AMSA APPROVED MARINE COLLEGE CONTACT INFORMATION

As the list of AMSA approved providers is subject to change, please refer to the AMSA website: www.amsa.gov.au/Marine_Qualifications/AMSA_Approved_Courses/