



CAREER PATH OPTIONS – RATINGS

This Fact Sheet explains the career pathways and training requirements for ratings serving on a “regulated Australian vessel”.

Rating qualifications

Provided the certificate is appropriate to the position on the vessel, ratings can hold any of the following:

- Navigational Watch Rating Certificate (STCW Reg II/4)
- Engine Room Watch Rating Certificate (STCW Reg III/4)
- Certificate of Proficiency as Integrated Rating (STCW Reg II/4 and Reg III/4)
- Certificate of Proficiency as Integrated Rating (STCW Reg II/5 and Reg III/5)
- Certificate of Proficiency as Chief Integrated Rating (STCW Reg II/5 and Reg III/5)
- Certificate of Proficiency as Able Seafarer – Deck (STCW Reg II/5)
- Certificate of Proficiency as Able Seafarer – Engine (STCW Reg III/5)

Trainee Ratings

To serve on a “regulated Australian vessel” (RAV):

1. Trainee Navigational Watch Ratings and Engine Room Watch Ratings on the six months qualifying sea service pathway must hold an AMSA Certificate of Safety Training (STCW Reg VI/1) with security awareness endorsement (STCW Reg VI/6-1) and a valid Form AMSA303 Certificate of Medical Fitness

before they join their first ship.

2. Trainee Navigational Watch Ratings and Engine Room Watch Ratings on the two months qualifying sea service pathway must hold an AMSA Certificate of Safety Training (STCW Reg VI/1) with security awareness endorsement (STCW Reg VI/6-1) and must also complete approved shore based training before joining their first ship (See Schedule 1).
3. Trainee Integrated Ratings in addition to holding a Certificate of Safety Training and a valid Form AMSA303 Certificate of Medical Fitness must also complete the 12/13 week shore based training program before joining their first ship.

Approved training program

All Ratings must complete an AMSA approved training program that meets the requirements of STCW. The approved training program is based on the Certificate III in Maritime Operations (Integrated Rating), which consists of 21 units of competency, five Task and Guided Study Books (TAGS Books) and qualifying sea service.

The 21 units of competency have been divided in separate sections or courses, namely, pre-sea (Certificate of Safety training), deck rating requirements (A), engine rating requirements (B) and units of competency common to both deck and engine room ratings (C).

Schedule 1 – Training program – Units of competency explained

NOTE: Units of competency are from the revised Draft *MAR30515 Certificate III in Maritime Operations (Integrated Rating)*, which is expected to be finalised in 2015.

Pre-Sea – Certificate of Safety Training

Unit Number	Competency	STCW Reference
MARF003	Follow vessel security procedures	STCW Code Table A-VI/6-1
MARF006	Observe personal safety and social responsibility	STCW Code Table A-VI/1-4
MARF008	Prevent and fight fires on board a vessel	STCW Code Table A-VI/1-2
MARF009	Survive at sea in the event of vessel abandonment	STCW Code Table A-VI/1-1
HLTAID003	Provide first aid	STCW Code Table A-VI/1-3

Approved course Part A – Deck department ratings

Unit Number	Competency
MARC029	Apply basic rigging
MARC028	Operate deck machinery, cargo handling gear and equipment on a vessel
MARK005	Steer a vessel under the direction of the master
MARO006	Contribute to monitoring a safe navigational watch

Approved course Part B – Engine room department ratings

Unit Number	Competency
MARB016	Perform routine engine maintenance on a vessel
MARC3008A	Operate engine equipment and associated propulsion plant
MARO005	Contribute to monitoring and controlling a safe engine watch

Approved course Part C – Units of competency common to both deck and engine ratings

Unit Number	Competency	STCW Reference
MARB017	Perform routine maintenance on a vessel	
MARC030	Use and care of hand and power tools	
MARF018	Assist in an emergency response	
MARF019	Operate emergency equipment and apply emergency procedures	
MARJ001	Follow environmental work practices	
MARN007	Use seamanship skills on board a vessel	
MSAPMPER200C	Work in accordance with an issued permit	
MSAPMPER205C	Enter confined space	
MARF007	Operate survival craft and other lifesaving appliances	STCW Reg VI/2-1 Proficiency in survival craft and rescue boats other than fast rescue boats

Evidence of having completed tanker familiarisation is completion of:

- MARC028 Operate deck machinery, cargo handling and equipment on a vessel, or;
- The tanker familiarisation skill set in the revised Maritime Industry Training Package (2015), or
- The existing units MARA3001A Contribute to safe cargo operations on liquefied gas tankers and MAR3002A Contribute to safe cargo operations on oil and chemical tankers.

Schedule 2 – TAGS Books explained

The approved Task and Guided Study (TAGS) books consist of:

TAGS Book 1 – Shipboard induction, shipboard procedures, engine room duties, WHS/OHS requirements

TAGS Book 2 – Survival management, survival craft, firefighting and prevention

TAGS Book 3 – Engine room, deck machinery

TAGS Book 4 – Ships maintenance and marine rigging

TAGS Book 5 – Dry cargo, liquid cargo, offshore vessels

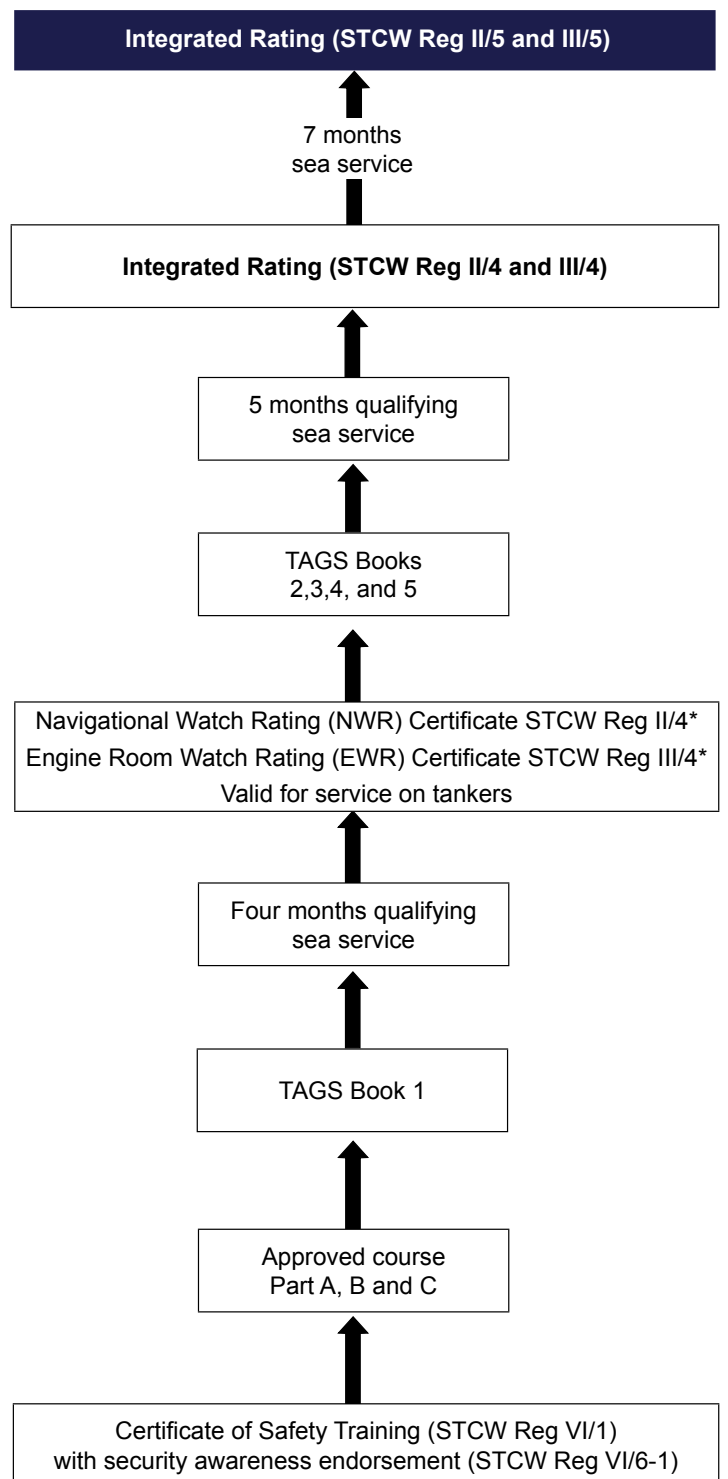
Trainee Integrated Ratings after four months qualifying sea service and completion of TAGS Book 1 may receive STCW Regulation II/4 – ratings assisting in keeping a navigation watch and STCW Regulation III/4 – ratings assisting in keeping in an engine room watch.

TAGS Book 1 has also been re-issued as two separate volumes. One volume is suitable for trainees who wish to obtain a Navigational Watch Rating certificate. The other volume is suitable for trainees who wish to obtain an Engine Watch Rating certificate.

Schedule 3 – Rating pathway flow charts

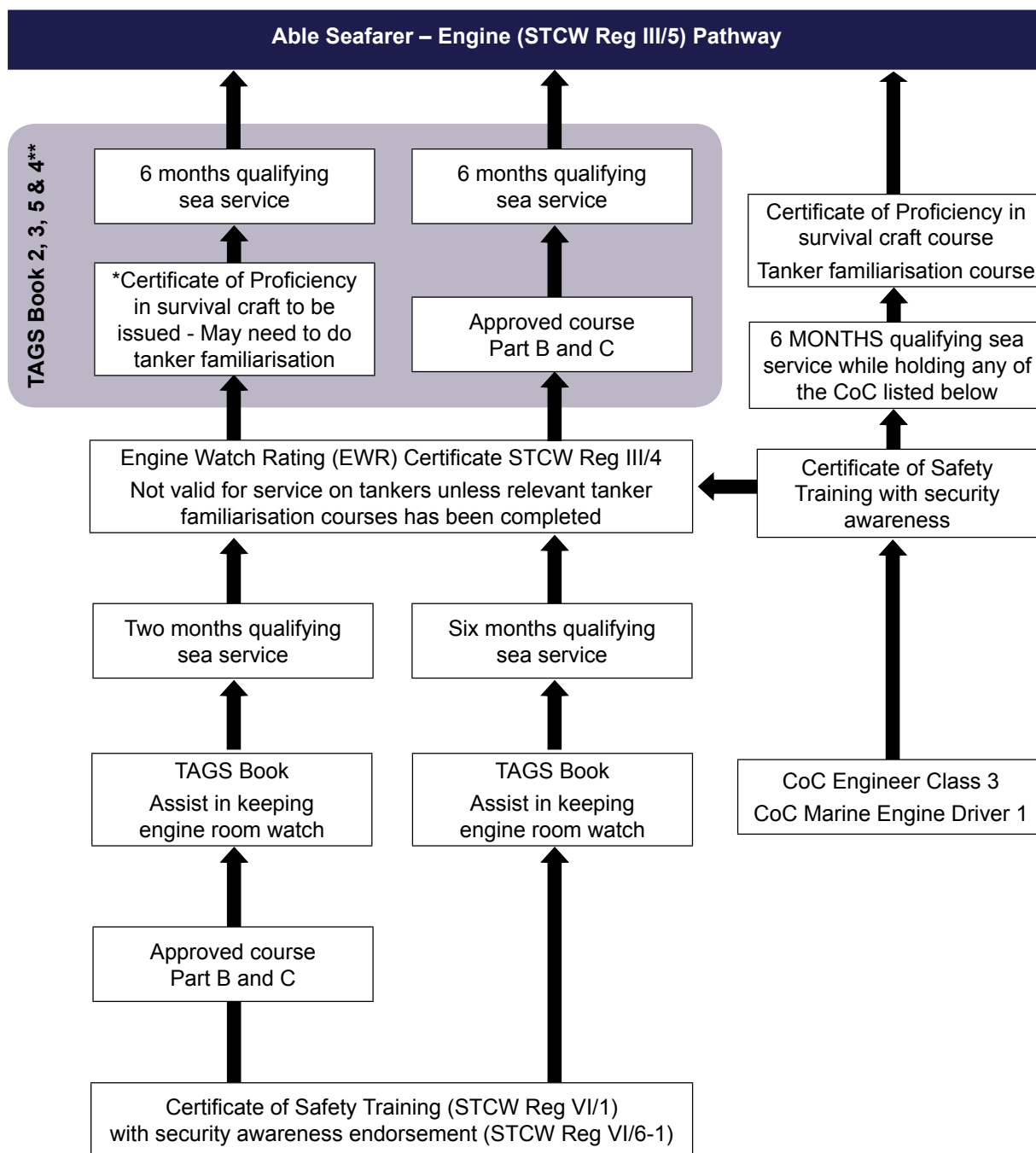
1. Integrated Rating pathways
2. Able Seafarer – Engine pathway, also explains pathway for Engine Watch Rating for holders of an CoC as Engineer Class 3 and Marine Engine Driver Grade 1
3. Able Seafarer – Deck pathway, also explains Navigational Watch Rating and CoC as Master <80m NC, Master <35m NC and Mate <80m NC pathways.
4. Able Seafarer – Engine and Navigational Watch Rating pathway
5. Able Seafarer – Deck and Engine Watch Rating pathway
6. Engine Watch Rating to Navigational Watch Rating pathway.
7. Navigational Watch Rating to Engine Watch Rating pathway.

1. Integrated Rating Pathway



*Endorsement signed in back of TAGS Book 1 by AMSA Examiner

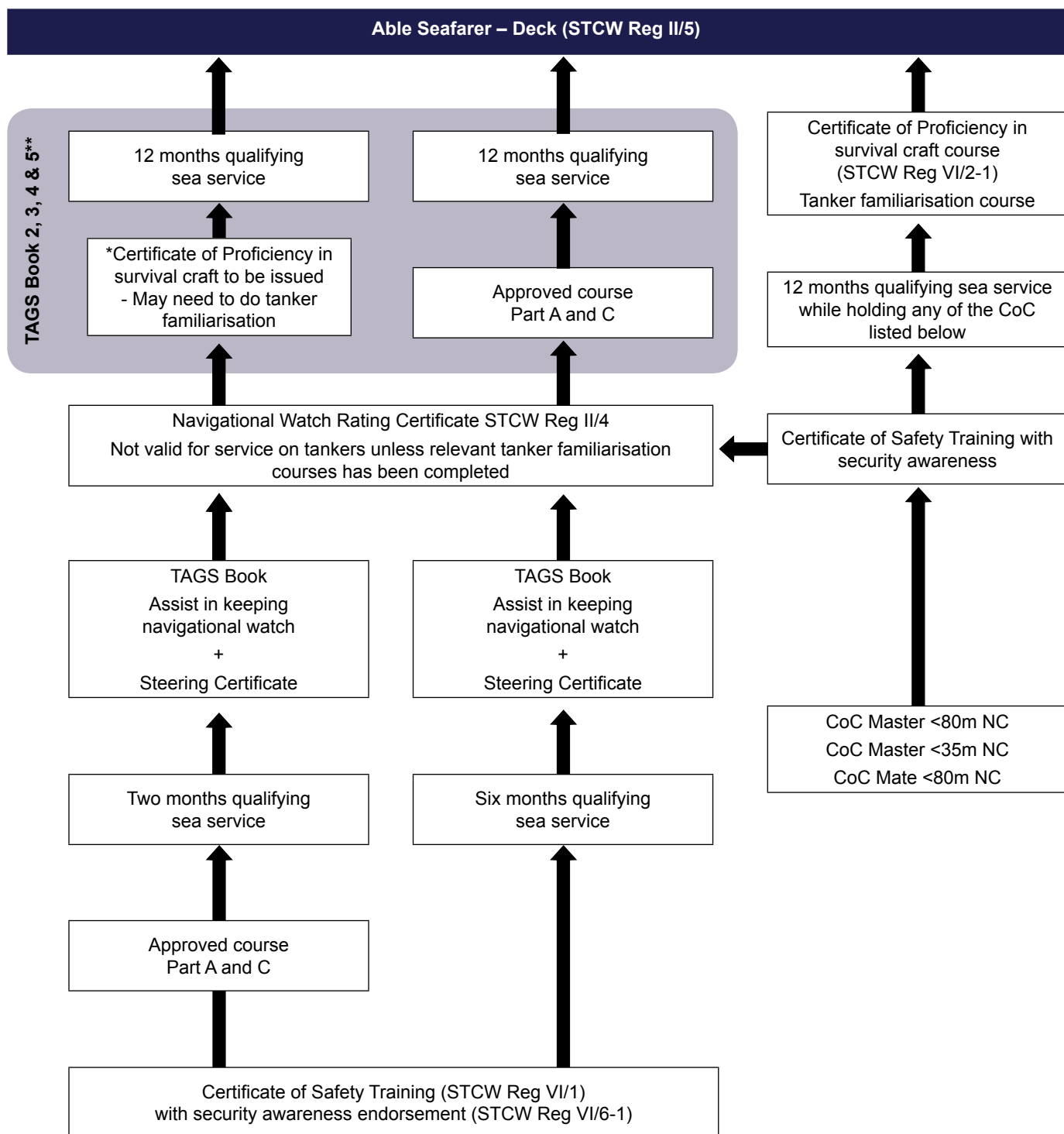
2. Able Seafarer – Engine Pathway



* A Certificate of Proficiency in survival craft can only be issued after completion of six months sea service (STCW Reg VI/2 (1.2))

**AMSA approved RTOs may decide if all section of TAGS Book 3 need to be completed.

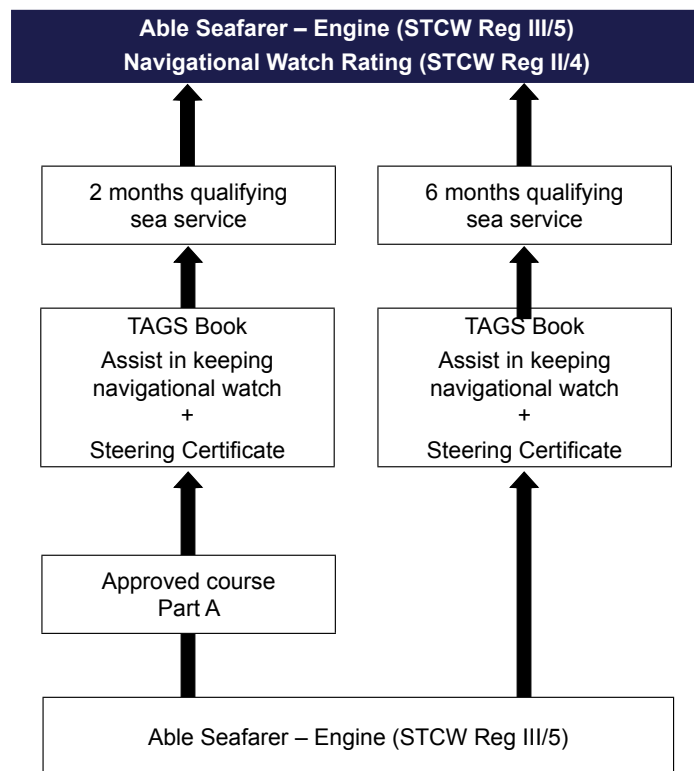
3. Able Seafarer – Deck (STCW Reg II/5) Pathway



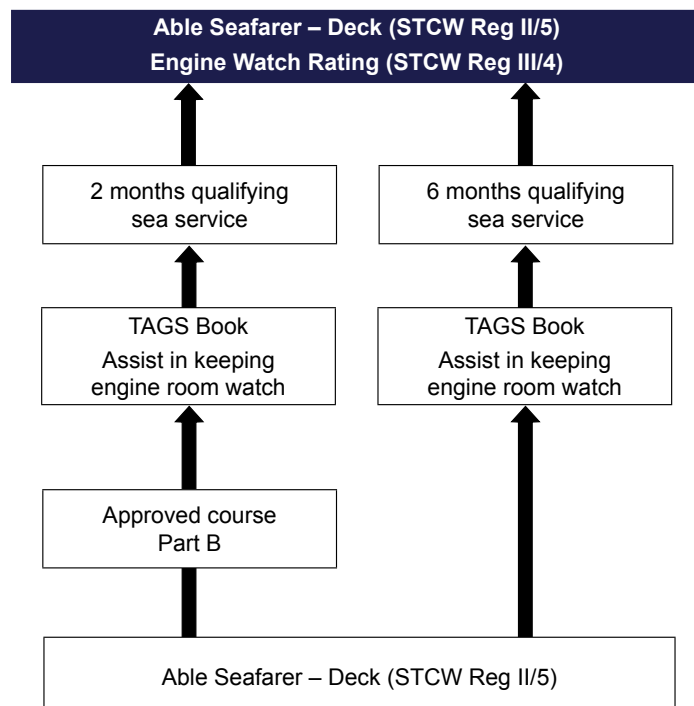
* A Certificate of Proficiency in survival craft can only be issued after completion of six months sea service (STCW Reg VI/2 (1.2))

**AMSA approved RTOs may decide if all section of TAGS Book 3 need to be completed.

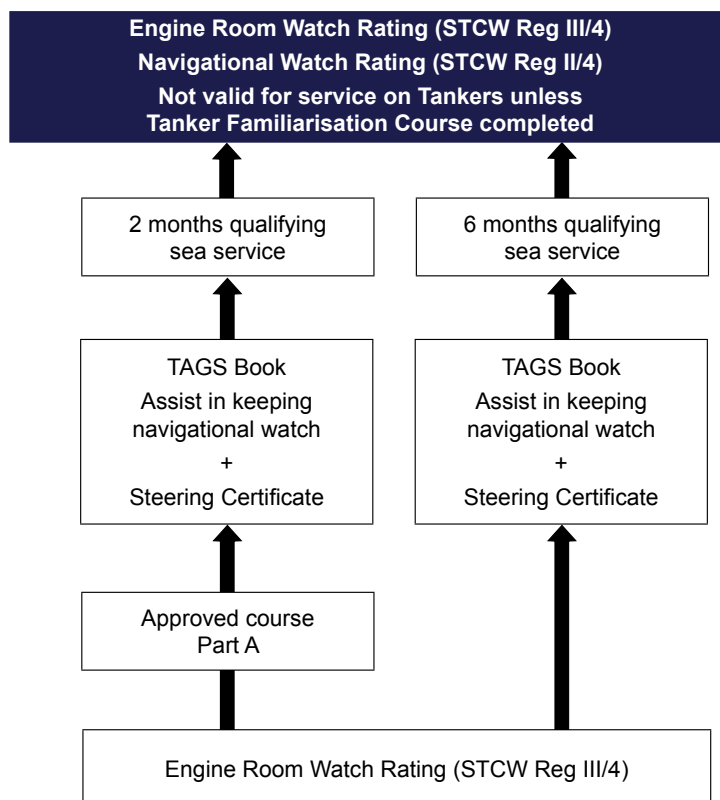
4. Able Seafarer – Engine with Navigational Watch Rating Pathway



5. Able Seafarer – Deck with Engine Watch Rating Pathway



6. Engine Room Watch Rating to Navigational Watch Rating Pathway



7. Navigational Watch Rating with Engine Room Watch Rating Pathway

