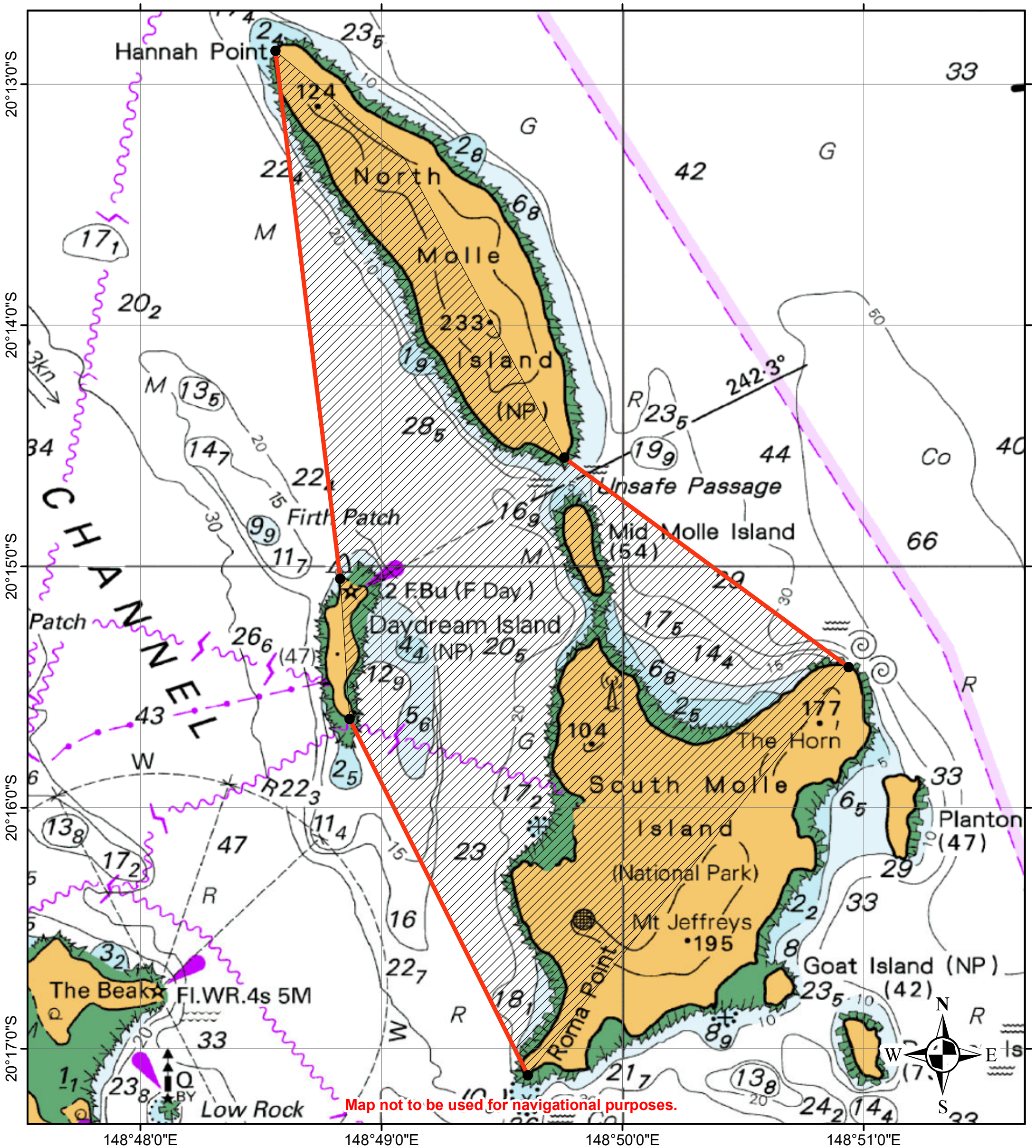


Schedule 1: Map showing approved waters around Daydream, North and South Molle Islands, Queensland



Australian Government
Australian Maritime Safety Authority



Map not to be used for navigational purposes.

This map was produced by the Australian Maritime Safety Authority
GPO Box 2181
Canberra, ACT, 2601
© Commonwealth of Australia 2019

Author: Anthony Greenhalgh
Date: 12/03/2020
Reference: RItem0019054

Base Map
Base Map: AUS Charts provided by the Australian Hydrographic Service, © Commonwealth of Australia 2020.

Data Sources
Data Extracted from Exemption 38 (Waters) Approval 2020



Coordinate System:
GCS WGS 1984
Datum: WGS 1984
Units: Degree

