



Australian Government

Australian Maritime Safety Authority

# VESSEL LIGHTSHIP REPORT

Marine Safety (Domestic Commercial Vessel) National Law Act 2012

Marine Order 503 (Certificates of survey – national law) 2017

This checklist is for use by accredited surveyors witnessing a lightship measurement of a domestic commercial vessel. It is an acceptable means for reporting a lightship measurement to the National Regulator.

## A. Vessel details

Vessel name

Unique identifier

Service category

Owner of vessel

Builder of vessel

Purpose of lightship measurement

- ☐ New Vessel ☐ Modified Vessel ☐ Change of Class  
☐ Renewal Survey ☐ Other

Measured length  $L_m$  (metres)

Breadth  $B$  (metres)

Lightship measurement location

Date of lightship measurement

## B. Weather and mooring

State of weather

Mooring arrangements

## C. Persons present at measurement

Name of person conducting the lightship measurement

Company or trading name

## D. Correction of weights

Items **noted** on board the vessel during inclining (Items of significant weight, e.g. anchors, life raft, trawl boards, ballast, etc):

Item description	Mass (tonnes)	Location

Items to be **added** to the vessel after the inclining to arrive at lightship (description, weight & location):

Item description	Mass (tonnes)	Location

Items to be **removed** from the vessel after the inclining to arrive at lightship (description, weight & location):

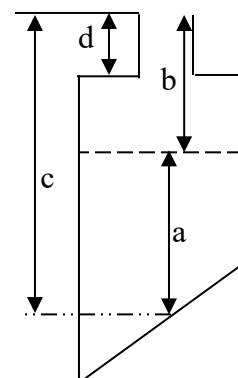
Item description	Mass (tonnes)	Location

Items to be **moved** after the inclining to arrive at lightship LCG and VCG (description, weight a movement required):

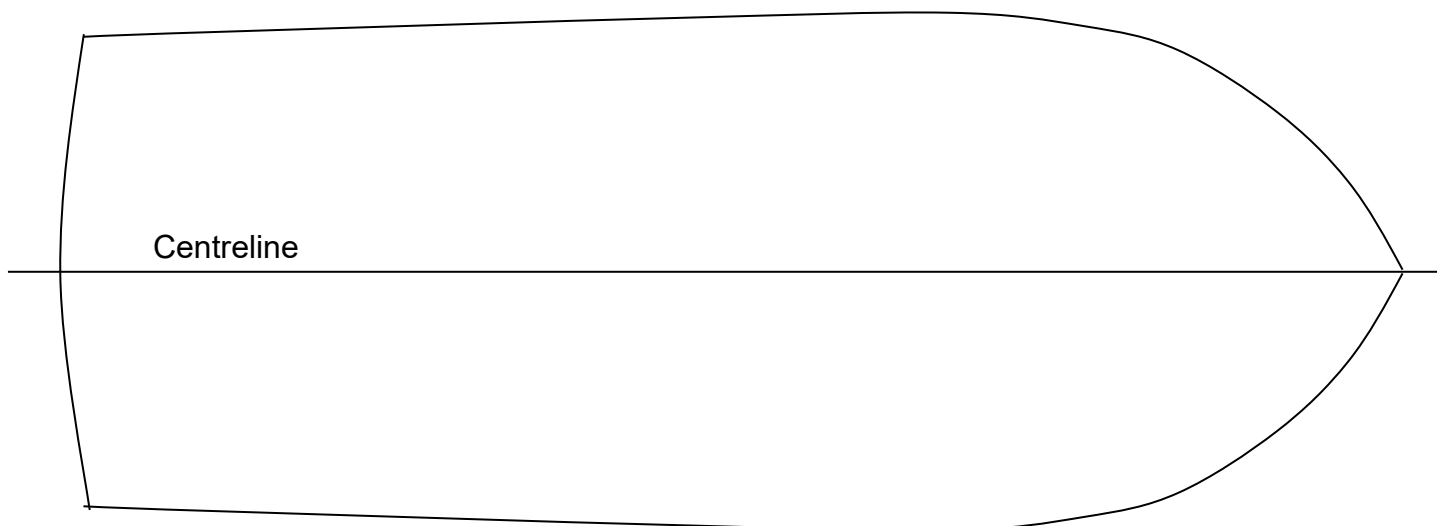
Item description	Mass (tonnes)	Location	Movement Required

#### E. Tank contents (e.g. fuel, water, sullage, lube oil etc.)

Tank Name	Sounding (a)	Ullage (plus filler length) (b)	Depth (c)	Filler pipe Length (d)



## F. Sketch tanks and watertight bulkheads

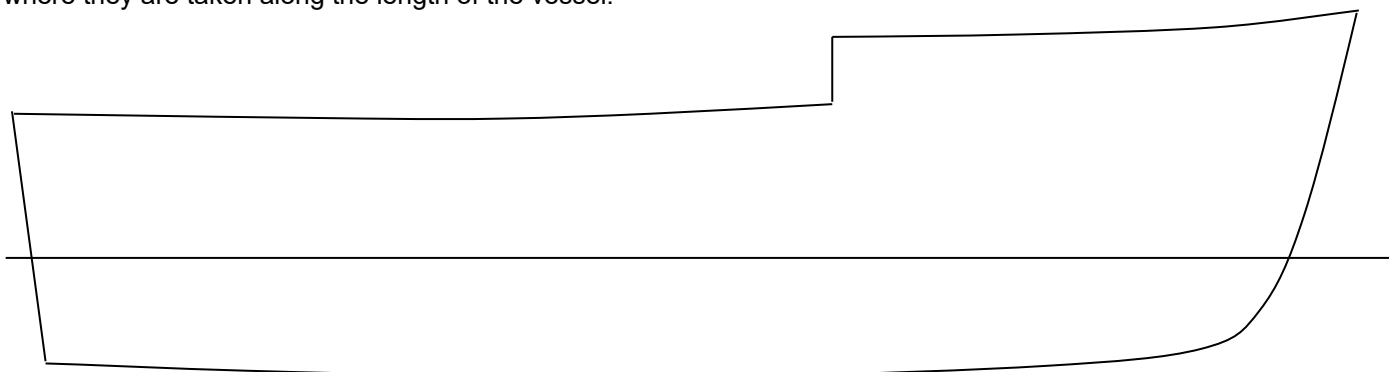


## G. Draft mark reading

Draft marks on vessel: ☐ Yes ☐ No

Aft		Midships		Forward	
Port:		Port:		Port:	
Stbd:		Stbd:		Stbd:	

On the diagram below, sketch the location of the draft marks. If freeboards are measured, indicate on the diagram, where they are taken along the length of the vessel.



## H. Specific gravity of water

Sample 1	Sample 2	Sample 3

## I. Record of lightship details

	Lightship displacement (t)	LCG(m)
Derived at this measurement		

Derived from last measurement (as applicable)		
---	--	--

## J. Lightship variation check (as applicable)

Name of competent person that has derived lightship	Qualification of competent person

	Displacement (%)	LCG (%)
Percentage difference		

- a) Change in lightship displacement is less than 4% Yes ☐ No ☐
- b) Change in lightship LCG is less than 2% Yes ☐ No ☐

**Note:** If you have answered no to either (a) or (b) above, inform the owner of their obligation to demonstrate that the vessel stability remains adequate to perform its intended operation. This may involve re-assessing the vessel against the relevant stability criteria using the revised lightship particulars. If the vessel is an “existing” vessel as defined in Marine Order 503, it has triggered transitional requirements and is required to undergo a renewal survey against the transitional standards listed in Schedule 2 of Marine Order 503.

## K. Declaration

I declare that I have conducted a survey of the above mentioned vessel in accordance with the applicable standards & conditions as set out in Marine Order 503 and that to the extent evident from the inspections carried out am satisfied that the vessel meets these standards.

Name of surveyor:

Signature of surveyor:

Date of completion:

Surveyor identification number: