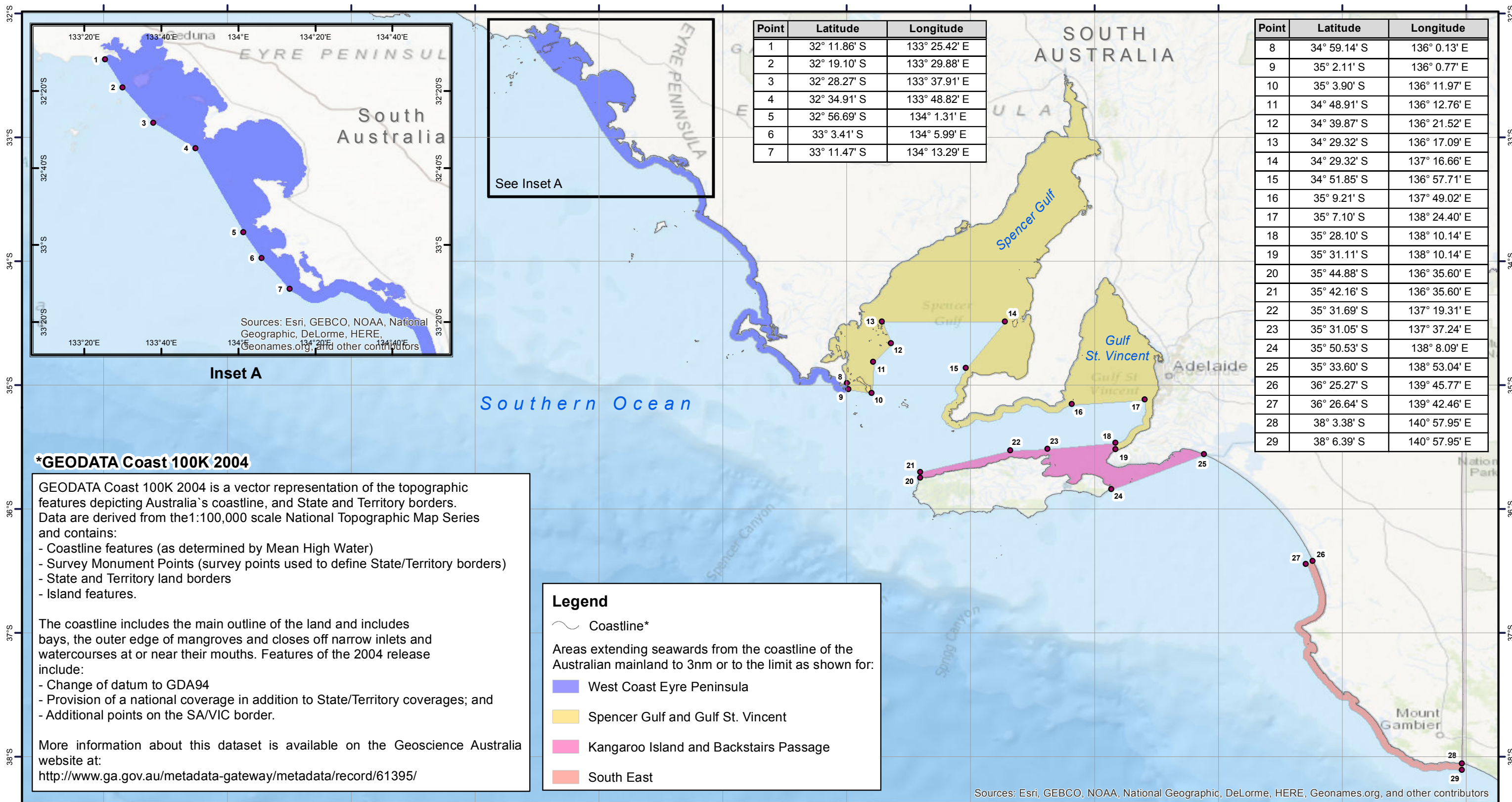




Schedule 4 (Figure 1 - Vessels < 7.5m) Specified Areas for Class 2C Restricted or Class 3C Restricted South Australia



*GEODATA Coast 100K 2004

GEODATA Coast 100K 2004 is a vector representation of the topographic features depicting Australia's coastline, and State and Territory borders. Data are derived from the 1:100,000 scale National Topographic Map Series and contains:

- Coastline features (as determined by Mean High Water)
- Survey Monument Points (survey points used to define State/Territory borders)
- State and Territory land borders
- Island features.

The coastline includes the main outline of the land and includes bays, the outer edge of mangroves and closes off narrow inlets and watercourses at or near their mouths. Features of the 2004 release include:

- Change of datum to GDA94
- Provision of a national coverage in addition to State/Territory coverages; and
- Additional points on the SA/VIC border.

More information about this dataset is available on the Geoscience Australia website at:
<http://www.ga.gov.au/metadata-gateway/metadata/record/61395/>

Legend

- Coastline*
- Areas extending seawards from the coastline of the Australian mainland to 3nm or to the limit as shown for:
 - West Coast Eyre Peninsula
 - Spencer Gulf and Gulf St. Vincent
 - Kangaroo Island and Backstairs Passage
 - South East

Sources: Esri, GEBCO, NOAA, National Geographic, DeLorme, HERE, Geonames.org, and other contributors



Base Maps
GEODATA COAST 100K 2004, Geoscience Australia
ESRI World Topographical Map
ESRI Ocean Basemap

Coordinate System: GCS GDA 1994
Datum: GDA 1994
Units: Degree