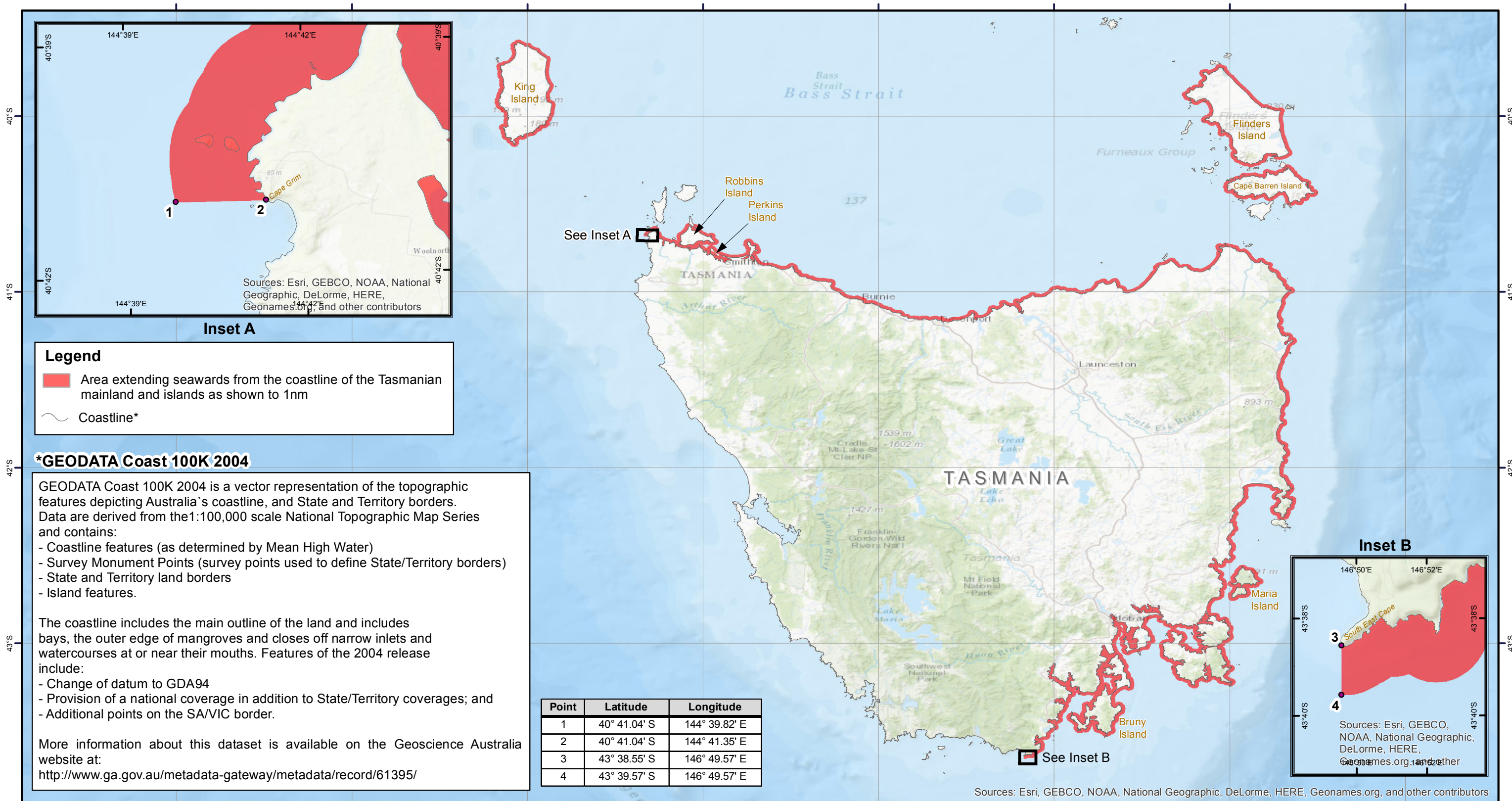




# Schedule 5 (Figure 1 - Vessels < 4.25m) Specified Area for Class 2C Restricted or Class 3C Restricted Tasmania



**Base Maps**  
GEODATA COAST 100K 2004, Geoscience Australia  
ESRI World Topographical Map  
ESRI Ocean Basemap

Coordinate System: GCS GDA 1994  
Datum: GDA 1994  
Units: Degree