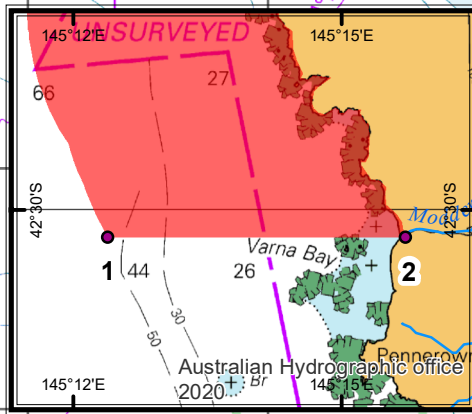
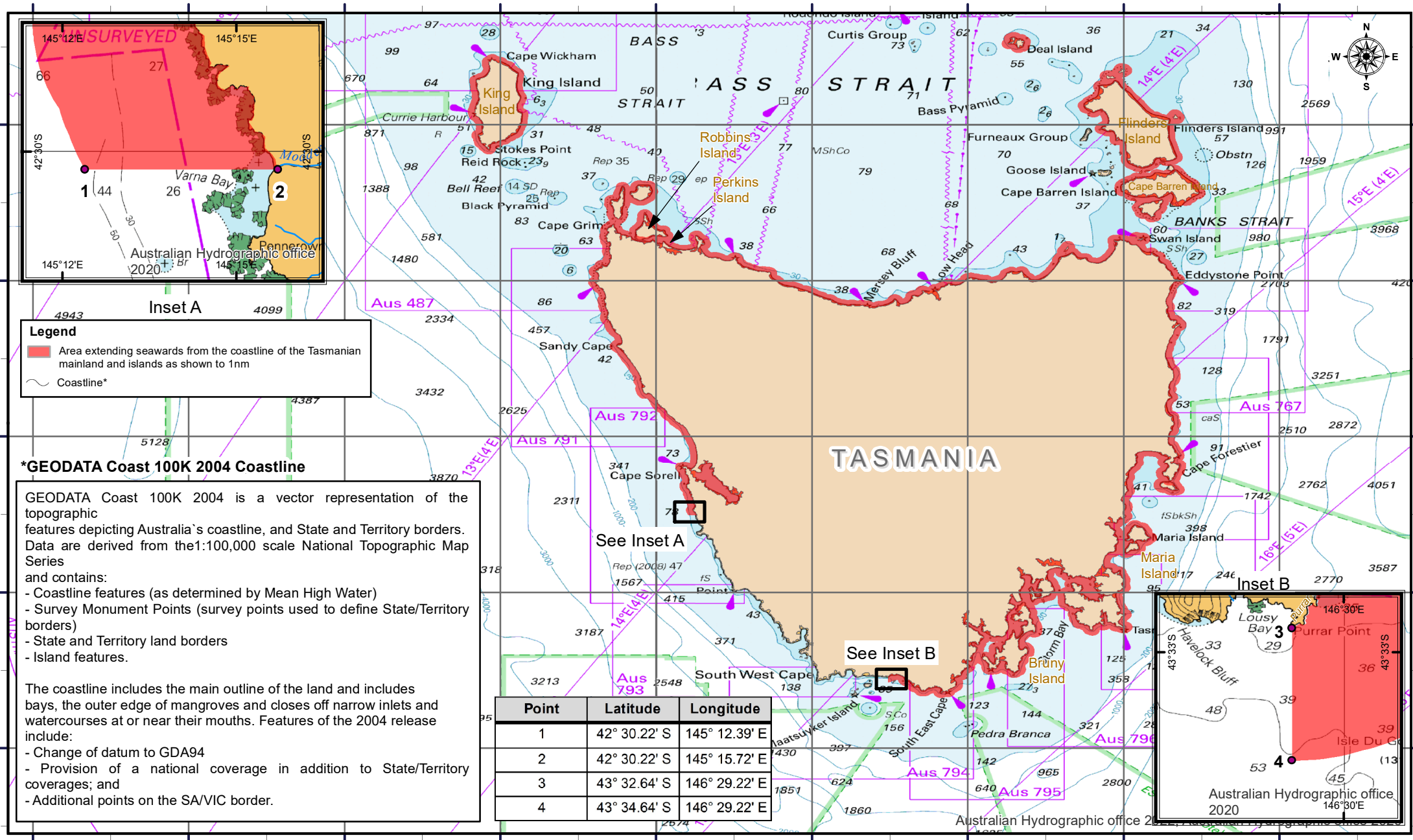


NSCV Part B (Specified areas) Determination 2023

Schedule 5 (Figure 2 - Vessels ≥ 4.25m to < 5.5m) Specified Area for Class 2C Restricted or Class 3C Restricted Tasmania



Legend

- Area extending seawards from the coastline of the Tasmanian mainland and islands as shown to 1nm
- Coastline*

***GEODATA Coast 100K 2004 Coastline**

GEODATA Coast 100K 2004 is a vector representation of the topographic features depicting Australia's coastline, and State and Territory borders. Data are derived from the 1:100,000 scale National Topographic Map Series and contains:

- Coastline features (as determined by Mean High Water)
- Survey Monument Points (survey points used to define State/Territory borders)
- State and Territory land borders
- Island features.

The coastline includes the main outline of the land and includes bays, the outer edge of mangroves and closes off narrow inlets and watercourses at or near their mouths. Features of the 2004 release include:

- Change of datum to GDA94
- Provision of a national coverage in addition to State/Territory coverages; and
- Additional points on the SA/VIC border.

Point	Latitude	Longitude
1	42° 30.22' S	145° 12.39' E
2	42° 30.22' S	145° 15.72' E
3	43° 32.64' S	146° 29.22' E
4	43° 34.64' S	146° 29.22' E

